

Returnstar PC E-Lock Finance V9.0

User Manual



Copyright(C) 2003-2007 Returnstar Electronic Information Co., Ltd.

Web: <http://www.recoverystar.com>

Tel: +86-591-83385086, 87274373

Fax: +86-591-87274383

E-mail: master@recoverystar.com

Important Statements:

1. Use this product strictly according to detailed operation instruction in this User Manual so as to ensure proper use. Please read the instruction thoroughly to save the installation time.

2. If this product is defective, please return it to the appointed agent or our company, together with your original sales receipt or invoice for replacement.

3. Returnstar Electronic Information Co., Ltd. is not liable for any consequential, incidental or indirect damages (including damages for indirect personal injury, loss of business profits, business interruption, loss of business information and the like) arising out of the use or inability to use this product.

4. The product includes enclosed software, later issue and update as well as correlative electronic documents and printing material. By installing, copying, downloading, visiting or using this product in any way, you agree to the terms and conditions of all the clauses in this user manual. The agreement on these clauses has the same effect as one signed through formal negotiation. You may not use this product unless you have agreed to all the clauses in this user manual

5. Returnstar Electronic Information Co., Ltd. will not accept returns of opened packages.

6. Special Notice:

- Please do not deliberately attack or use other tool software to destroy the product's normal running, or run FDISK/MBR, repartitioning, or low formatting after boot from FD or CD. Otherwise this company assumes no liability for all losses arising herefrom, express or implied.

- Please do not apply in the important occasions such the important network service as the satellite launch, the missile guide, the military control, the national secret, etc, without authorization of Returnstar Electronic Information Co., Ltd. Otherwise this company assumes no liability for all losses arising herefrom, express or implied.

- Regular backup of important data is still necessary when using this product. Returnstar Electronic Information Co., Ltd. does not undertake any compensation responsibility for any losses of HD arising from insufficient backup.

Copyright

Your purchasing of this product does not mean Returnstar Electronic Information Co., Ltd. has transferred the Intellectual Property Right. The product (including but not limited to any trademarks, images, photos, flash, video, recording music, writing and additional procedure, and other relative product), enclosed printed material, and any copies made in authorization of Returnstar Electronic Information Co., Ltd. are products of Returnstar Electronic Information Co. Ltd., and their Intellectual Property are owned by Returnstar Electronic Information Co., Ltd. The name of this product and all its copies are consistent in CD and the manual. The framework, organization and source code of this product are Returnstar's valuable commercial secret and may not be transferred. This product is protected by PRC Copyright Law, related international treaties, laws in the product using country.

No part of the product may be copied, modified, rented, leased, transferred in any ways without the writing permission or authorization of Returnstar Electronic Information Co., Ltd., You are allowed to use one product on one computer only. Any reverses engineering, decompiling, and decoding of this product, and retrieving the source code of the product by other ways is also prohibited.

Returnstar, Returnstar Jindun, Recoverystar, PC E-Lock are the registered trademarks of Returnstar Electronic Information Co., Ltd. Any modification of Copyright marks, product names and brand names of this product and its copies is strictly prohibited.

Returnstar Electronic Information Co., Ltd. reserves all rights to charge the fee at anytime for product replacement, revision and update. The information in this document is subject to change at anytime without notice.

Chapter 1 Product Introduction

Returnstar PC E-Lock software is one suite of behavior control and security management product, which is researched and developed by Returnstar Electronic Information Co., Ltd for years of endeavor. It has the following 5 versions:

1. Family Flagship Version: This version is suitable for parent who is not good at computer operations to control their children's computer behavior at home.

2. Family Perfect Version: This version is suitable for administrator (parent) to control their children's computer behavior at home.

3. Finance Version: This version is suitable for financial personnel or common computer users. It is effective tool in computer behavior control and security management.

4. Commercial Version: This version is suitable for businessmen and other users who have requirements in computer behavior control and security management.

5. Full Capability Version: It integrates all functions of Family Perfect Version and Commercial Version. It is suitable for other consumer group to use in different environments and management habits, and guarantees the effective management of the same computer in different environments.

Returnstar Electronic Information Co., Ltd has become a global leader in the computer behavior control and security management. It is the only one solution provider of the comprehensive and perfect computer behavior control and security management for family, commerce, enterprise, office, internet cafes, school computer lab, factory, network center. These solutions (including PC E-Lock, HDD Lock, Personal Key, Network Alarm System and Network Monitor System) greatly enhance the efficiency of computer behavior control and security management for computer user and administrator, and solve the key problems on computer management which has disturbed PC users all over the world.

This is an installing and operating manual for Returnstar PC E-Lock Finance.

Chapter 2 Product Characters

Returnstar PC E-Lock Finance Version has the following strong characters:

2.1 Plug & Play, real-time control.

2.2 Easy to install and use. Anyone who knows a little about the computer can acquire the operation in 10 minutes.

2.3 Support Windows 2000/XP/2003 OS, it is compatible with any hardware and software when installing and using.

2.4 Resist deleting, tracking by special program, uninstalling and modifying the catalogue, file, and the program of the product after it is installed. So you do not need to worry about that someone will rename, modify, delete, uninstall or decrypt the product.

2.5 Resist deleting and terminating its program running through registry or task manager while running the product. So you do not need to worry about termination of the running by other people.

2.6 Function validly under Windows OS safe mode.

2.7 Bind PC E-lock with your PC after install, so each PC E-Lock is sole in the world. Exchange to use it is not allowed. It is like that you and your neighbor have each set of lock and key, but your keys can not be exchanged to use.

2.8 Use triple protection—PC E-Lock firmware program protection, PC E-Lock hardware protection and password protection; and dual identification technology—password identification and PC E-lock identification. Completely guarantee computer behavior control and security management. It is of the highest security and reliability.

Chapter 3 System Requirements

Ensure your PC has the following characters:

- USB 1.1 or above
- 80X86 compatible computer system
- More than 500MB HDD free space, and more than 32MB memory.
- Operating System: Windows 2000/XP/2003.
- Make sure you have installed LAN Card in the computer.

Chapter 4 Product Install

Plug PC E-Lock into USB port, and click “*SETUP.EXE*” to install this product. Finish installation according to the prompt.



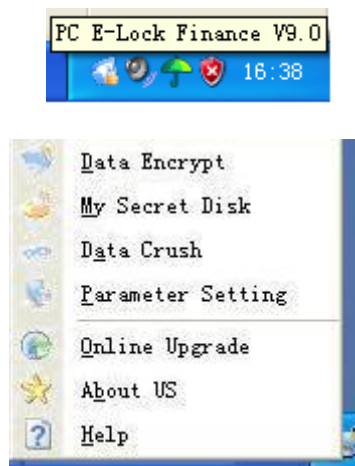
Caution: Make sure to plug PC E-Lock into USB port to install, otherwise installation cannot be finished



Caution: Because of the speciality of the product, any shortcut will not be created on program menu and desktop in OS, or on [add and remove program] after setup.

After finishing install, restart the computer and plug PC E-Lock into USB port. It will automatically popup Product Main Interface.

If you don't need to set up it temporarily, you can click the minimize icon at the top right corner of product interface, minimizing it to a tray (a system taskbar icon), please refer as follows:



You can set the product functions again by clicking or right-clicking it.

Chapter 5 Product Usage

5.1 Data Encrypt

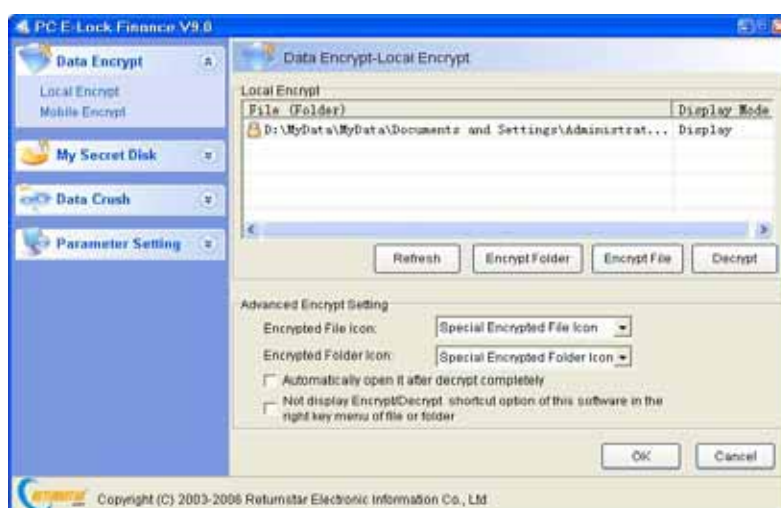
Provide two different encrypt methods: “*Local Encrypt*” and “*Mobile Encrypt*”. As follows,

5.1.1 Local Encrypt: It is of the highest security.

- File or folder which has been encrypted will be unable to open or decrypt, when it is renamed or copied to other places.
- File or folder which has been encrypted can still be found and opened or decrypted from encrypted file (folder) list on the “*Data Encrypt*” Main Menu (see the below figure), after it is deleted,.
- If the encrypted file or folder is cut, you are unable to open or decrypted them in the new path, but you can still find and open or decrypt from encrypted file (folder) list on the “*Data Encrypt*” Main Menu (see the below figure). It can effectively prevent others from using, deleting or modifying the storage path or copying your data in the computer.

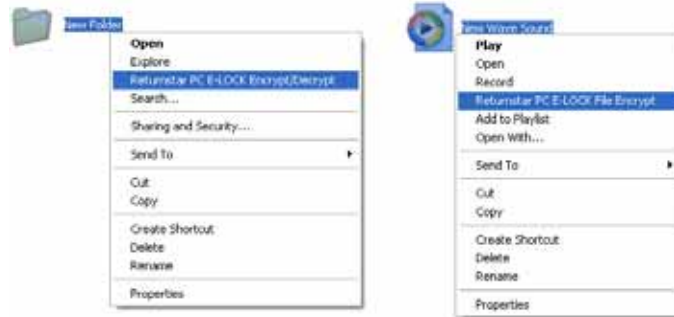


Caution: if you want to inquire file (folder) in the list again after you close an encrypted folder or file, you have to refresh it by the “*Refresh*” button.

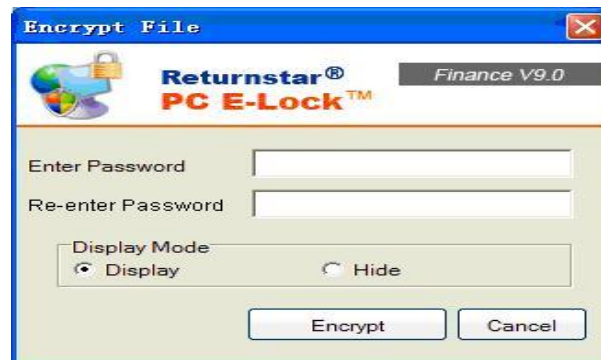


Provide an item list for encrypted file (folder). You can add the item of file (folder) which you need to encrypt to the list (which shows the path and display

mode of encrypted file or folder, etc.) by selecting “Add File” or “Add Folder”. You can move the mouse to the file or folder which you need to decrypt in the list and click “Decrypt” then input your password in the popup box. The file or folder will be opened or decrypted. You are also able to encrypt or decrypt the file or folder by clicking “Encrypt” or “Decrypt” shortcut option on the right- key menu of file or folder in the explorer.



“Local Encrypt” has two different display modes: *Display* and *Hide*. It means the encrypted file or folder will be displayed or hidden on the Windows explorer. The system default is “Display”.





Caution:

- If you adopt “Hide” to display the file or folder by “Local Encrypt”, you must decrypt it on the “Data Encrypt” Main Menu (see the above figure) since it can not be found on the explorer.
- After reinstalling OS, all encrypted files or folders will the password you set and stay in encrypted state. You are able to decrypt them when you re-install the product.
- The encrypted folder can not be in the partition where you will re-install OS, otherwise it will be deleted when re-install.
- After uninstalling PC E-lock, the previously encrypted folder is unable to be decrypted moreover it keeps encrypted all the same. You are able to decrypt them when re-install the product.

We provide some parameters for users’ convenience as follows,

Encrypted File Icon: Provide three different icons.

- Windows Standard File Icon
- Special Encrypted File Icon
- Customized File Icon (The format must be .ICO)

The system default is “*Special Encrypted File Icon*”.



Encrypted Folder Icon: Provide three different icons.

- Windows Standard Folder Icon
- Special Encrypted Folder Icon
- Customized Folder Icon (The format must be .ICO)

The system default is “*Special Encrypted Folder Icon*”.



Not display Encrypt/ Decrypt shortcut option in the right- key menu of file or folder: it prevents others from knowing what you used. The system default is “*Display Encrypt/Decrypt shortcut option*”.

Open file (folder) automatically after it is decrypted: The system will automatically open the file or folder after it is decrypted. The system default is “*Open*”.

5.1.2 Mobile Encrypt

The file or folder encrypted by Local encrypt is unable to move. So you must use Mobile Encrypt to encrypt the file or folder if you need to move it. It can ensure security of moving file and folder mostly. The mobile-encrypted file or folder is of the following characteristics:

- The encrypted package which has been mobile encrypted is in “EXE” format. The file can be deleted, copied, moved to other path or other computers while keeping encrypted.
- No matter how the mobile encrypted packages is copied or moved, it is able to be opened or decrypted in the computer without installing PC E-Lock.



Click “*Add File*” or “*Add Folder*” and select the file or folder which you need *mobile encrypt* in the popup explorer (The file or folder path will display on the mobile encrypt item). Select “*Delete the original file or folder after it is mobile encrypted*”. The system default is “*Delete*”. Then click “*Mobile Encrypt*” and input your password in popup dialog box, the file or folder would be mobile encrypted. As follows,



Double-click the mobile encrypted package on the system Explorer, it will automatically popup the " *Mobile Decrypt*" Box then input your password to decrypt. As follows,



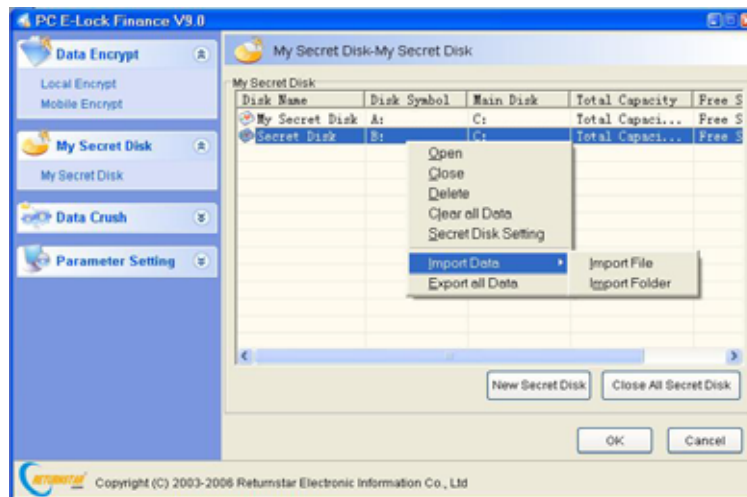
Prompt: (Applied in Local Encrypt or Mobile Encrypt)

- The encrypted file is valid under safe mode and DOS or other operating systems.
- The encryption function adopts the multiple encryption methods which combine our exclusive developed encryption technology with the current leading multiple encryption technology. No matter who is proficient at computer or whichever tools are used, it can not be decrypted. Therefore you must bear your password in mind.
- Please do not encrypt the folders such as "Windows", "Program Files", and "SYSTEM32" etc which are needed by system. Otherwise it is possible to cause the system error.
- The encrypted file or folder is unable to copy, read and write. So it can prevent the virus and Trojan from ruining and attacking.
- The encrypted file or folder is unable to execute, avoiding the potential destroyer using the program. For example, some files or folders get new virus, however, anti-virus software only can identify its path but not delete them. You can use the function to lock the file or folder with virus and then kill them after anti-virus software update.
- Data Encrypt supports any program files such as ".EXE" etc.
- If the user locked A file or A folder, then A file or A folder shortcut will be ineffective

5.2 My Secret Disk

It is of the so-called file safe function. You can set up one or more new secret

partitions in any original partition with free space. You can copy the secret data or save them to these secret disks, which can prevent others from seeing or using it under Controlled Mode. You can create, set and manage multiple secret disks in it. As follows,



5.2.1 New Secret Disk

Click “New Secret Disk”, the system will popup the New Secret Disk Setting dialog box. As follows,



Set your new secret disk, including “Secret Disk Name” (support names in various kinds of language, but these names does not exceed 16 Chinese characters or 32 characters, and the detailed stipulation is same as “WINDOWS partition naming”, “Secret Disk Symbol”, “New Space on” (means to select the main disk in which you set up the new secret disk,, and we provide all current disk symbol and corresponding free space for your selection), and “Secret Disk Password” in this dialog box. Then click “OK” to display new secret disk item on the “Secret Disk List”



Prompt:

- *The secret disk is one or more partitions you set up in previous partition, which means that it is based on the original partition. We can consider it as “partition in partition”. The space of the original partition will reduce when you add files in the secret disk.*
- *After OS reinstall or software uninstall, all the secret disk and data in it will not be destroyed so long as you do not re-part or change partition format. You will find the secret disk and data after you re-install this software.*
- *You can set up several secret disks. These secret disks can not use the same name and disk system, but can be set up on the same partition. All secret disks’ passwords could be different.*
- *After setting up your secret disk, do not need to format .The partition is in the same format as the original partition.*

Provide secret disk list on “My Secret Disk” setting Interface, which lists all current secret disk items established (displaying Secret Disk Name, Secret Disk Symbol, Main Disk, Used Space, Free Space etc.). Move the mouse to the secret disk item on the list and right-click, you can see the pull down menu then select the following options to operate the secret disk.

5.2.2 Open

Click “Open” and input your password in the popup dialog box. The secret disk explorer will automatically open the corresponding secret disk. You can operate them in the secret disk explorer as in the system explorer. You will find the secret disk symbol on the OS explorer.



Important Statement: *After deleted the secret disk in the secret disk explorer or in the system explorer, the data will not be on the Recycle Bin. Such design is to guarantee your private data security. The secret disk is deleted, like “Data Crush”. (Refer to the next section “Data Crush”)*

5.2.3 Close

Click "Close", the Secret Disk symbol will disappear in Windows explorer.

5.2.4 Delete

Click “Delete” and input your password in popup dialog box to delete the disk.



Important Statement: After deleting the secret disk, the data in it will be crushed and not exist on the Recycle Bin. Such design is to guarantee your private data security. The secret disk is deleted like “Data Crush”. (Refer to the next section “Data Crush”). The used space will be released to the main disk, after deleting the “secret disk”

5.2.5 Clear all Data

Click “Clear all Data” and input your password in popup dialog box to clear up all data in the disk.



Important Statement: After clearing up the secret disk, those data will never show up on the Recycle Bin. Such design is to guarantee your private data security. The secret disk is emptied, like “Data Crush”. (Refer to the next section “Data Crush”)

5.2.6 Secret Disk Setting

Click “Secret Disk Setting” to display the Secret Disk Setup Interface; you can reset the parameter and password.



Prompt: Please make sure that the free space of the new main disk must be larger than the used space of the secret disk before you change the main disk, otherwise the data transfer will fail!

5.2.7 Import Data

Click “Import Data” and input your password in popup dialog box, then select the catalog or file you want to move on the popup explorer. The catalog or file will be cut into the secret disk.

5.2.8 Export all Data

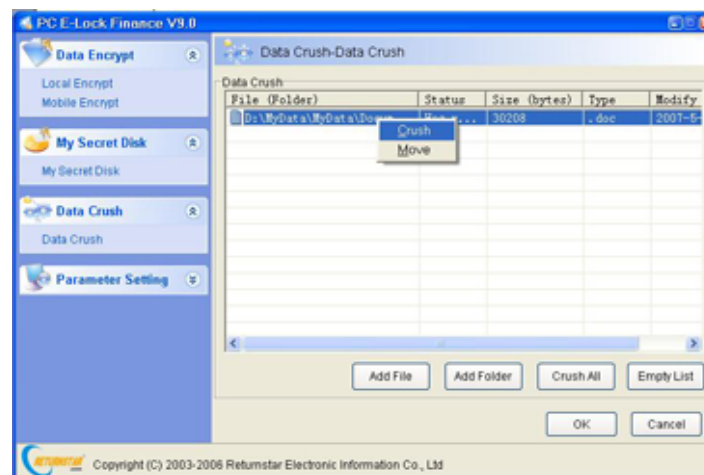
Click “Export all Data” and input your password in popup dialog box, then select the catalog you want to move on the popup explorer. All data in this secret disk will be cut into the catalog.

5.2.9 Close all Secret Disks

Click “Close all secret disks” and all open secret disks will be closed.

5.3 Data Crush

Provide item list of the file (folder) which is to be crushed. You can select “Add file” or “Add folder” to add the file (folder) on the list (displaying Path, Status, Size, Type, Time etc of the folder) . Move the mouse to the file or folder which you want to crush in the list and right-click to appear the pull down menu, and then click “Crush” to crush the file or folder, or click “Move” to clear the file or folder item from the list. Click “Crush All” at the lower corner of list to crush all files or folders. Click “Empty List” to delete all files or folders from the list. The crushed file or folder will display “Crushed” on the list as follows,



Important Statement: Data Crush function can not only delete the file and folder, but also clear up the file and folder's information on the sector thoroughly on the magnetic track. The crushed file or folder can't recover, even using the Final Data tool. Any behaviors trying to find out and restore the lost information will fail, so you should watch your step when execute the operation.

5.4 Parameter Setting

5.4.1 Administrator Password

Modify the administrator password, which is input directly into the lock.

5.4.2 Clear the Recent Document automatically when exiting the OS

Clear the recent documents automatically when exiting the OS. The system default is "*Enabled*".

Chapter 6 Advanced Applications



Finance Database Encrypt:

- Backup database files
- Set up the private secret disk such as Z disk
- Reinstall finance software and set up the install or database default catalog to the private secret disk (Z disk)
- When you do not login the PC E-Lock, the finance software will prompt error, and the database are unable to open. You can use the software normally and open the database when you login the PC E-Lock.



Finance Data Multi-encrypt:

- Mobile encrypt data if you need to move it.
- Save finance data to my secret disk
- Encrypt the finance data file
- Encrypt the catalog where finance data file is again
- After that your data has multiple protections. No one can guess your password easily and say nothing of decoding. Certainly you can also use the compress software such as WINRAR, etc to compress and encrypt again.

Chapter 7 Uninstall

Under the login state, click “*SETUP.EXE*” to uninstall and then finish it according to the prompt on Uninstall Interface. Please make sure to restart computer after uninstall.

Chapter 8 Upgrade

We provide two ways to upgrade the product:

- Click “*Upgrade*” option on the main interface or on the right key menu of small icon in taskbar, system will automatically prompt that upgrade package is found and now it is upgrading (subject to upgrade package version NO. and date). There is no need to uninstall the old version’s software when upgrade.



Prompt: *The function is only provided for registered version.*

- You have to uninstall the old version, and then download the new version to install from our website: www.recoverystar.com if this product has been significantly improved and upgraded.

Chapter 9 Notice

9.1 The product can not be used under the Windows 95, Windows NT 3.51, and Windows NT 4.0.

9.2 All functions of the product can be used separately and multiple set, but please note the function of “*Lock Computer*” has the priority to work.

9.3 It is not allowed to install another product of the same type on the same system.

9.4 PC E-Lock cannot be installed in more than one OS if you have several operating systems in your computer. Since you only have one USB Key, if you install PC E-Lock in more than one OS, after you have uninstalled it in one OS, the USB Key will be recovered to its original state, and thus you cannot uninstall PC E-Lock in another OS.

9.5 Please reinstall the product under newly installed operation system at once, in order to guarantee normal using.

9.6 The PC E-Lock once installed will be bound with your PC, so each one installed is the sole one in the world. Exchange to use is impossible. It is like that you and your neighbor has each set of lock and key, but your keys can not be exchanged to use.

9.7 One PC E-Lock is for one PC. The PC E-Lock installed is unable to be installed in another PC unless it has been uninstalled

9.8 Please do not touch the metal terminal inside of USB interface by your hand or metal. Keep this product away from water, fire, dropping, pressing, bending, punching, disassembling, high temperature, sunshine, humidity, and anything that will cause damage.

9.9 We designed three passwords for this product: Program Administrator Password, Lock File (folder) Password and My Secret Disk Password. They support blank password at the same time. You must preserve and secure your PC E-Lock and all kinds of password because the password, administrator password, PC E-Lock and your PC are bound together. Strongly recommend to make backup key by PCELockCopy.exe tool.

9.10 Please do not be confused with the PC E-Locks if you administer many sets of PC. It is impossible to unlock the PC by irrelative PC E-Lock, because of the corresponding relationship between PC E-Lock and PC. So it is necessary for you to identify them in numbers. E.g.: You can keep them in

different envelop with serial number or mark them.

9.11 You can use USB extend cable or USB HUB to connect this product.

Chapter 10 FAQ

10.1 Is there any product with similar function in the market at present?

A: There is no similar product with such high security and efficiency in the market at present. Maybe there are some products (pure software / software+ hardware) achieve some functions but with following shortcomings:

- Easy to be decrypted.
- Easy to be uninstalled and deleted by administrator.
- Easy to terminate or delete its program in the registry and task manager.
- Invalid under the safe mode.

Please be cautious to purchase.

10.2 What to do when PC E-Lock is lost?

A: There is no idea for us if you lose the PC E-Lock without backup key. The new lock can be made only by telling us your administrator password, and sending us locked the PC. For your PC E-Lock administer password and your PC are binding together, please be cautious to preserve and secure you PC E-Lock and administer password. It is strong recommended to make backup key by PCELockCopy.exe

10.3 What can you do if the icon in the taskbar still exists after you pull out the PC E-Lock?

A: Your PC may be temporarily in the state of hibernation. Logoff current user and re-plug and unplug PC E-Lock; or restart PC and re-plug and unplug PC E-Lock.

10.4 The system could not recognize PC E-Lock when you plug it, how to deal with it?

A: ● Please check whether you have set the USB port to “*Enable*” in BIOS. Steps to set BIOS: 1) Press “*Del*” key when you start the computer, and then enter CMOS setting interface;2) select” *INTERGRATED PERIPHERALS*”

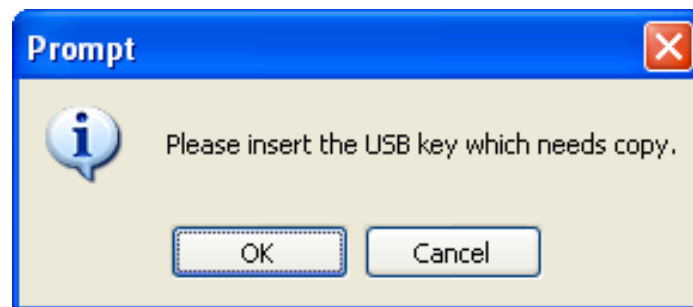
option, and press “*Enter*” key to open it; 3) Select “*USB Controller*” option, and press “+”or“-”, to set it as “*Enabled*”: 4) Save it and exit BIOS setting.

- The USB port is in poor touch or has been destroyed, please try again in another USB ports.
- Your PC system does not work well, please restart the PC and try again.

Appendix: How to make Backup Key

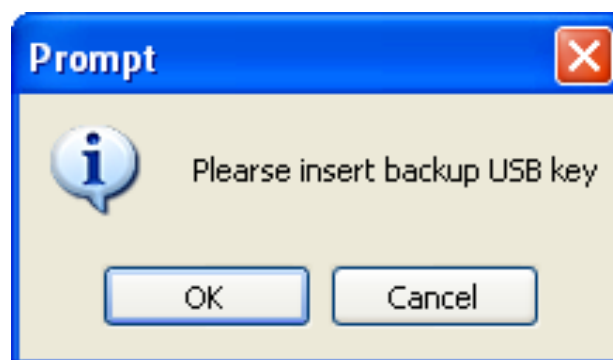
Strongly recommend you to buy one more PC E-Lock of the same mode to avoid embarrassment when the key is lost. Use *PCELockCopy.exe* to make backup lock. *PCELockCopy.exe* is green software for making backup PC E-Lock. It can run on CD-Rom directly or you can copy it from HDD Lock category and run it.

Click "*PCELockCopy.exe*" and the prompt "Please insert the USB key which needs copy" popup as follows:



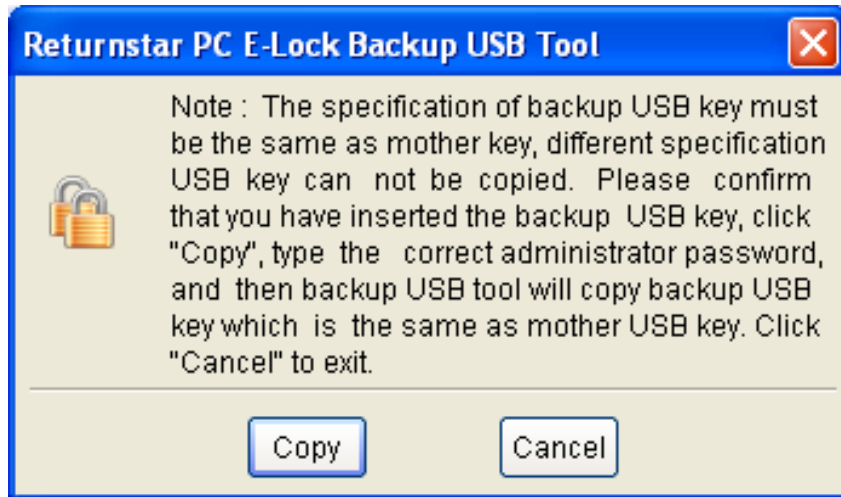
(Prompt Interface One)

Insert USB key that you need to copy and Click "OK", the prompt "Please insert backup USB key" will display, as follows:



(Prompt Interface Two)

Insert the backup USB key and click "OK", the Main Interface for making backup key will display as follows:



(Returnstar PC E-Lock Backup USB Tool)

Click “Copy”, and input the correct password in the prompt box “*Please input administrator password*”. Then it will prompt “*Successful Backup*”, and press “OK” to finish backup. PCELockCopy.exe will exit automatically. Pull out both keys from USB port one by one in the end.



Prompt: *The backup and original keys must be of the same mode. It will be unable to copy PC E-Lock with a different mode. The installed PC E-Lock cannot be used as backup key for other USB key. Please make backup key again once you change the administrator password.*



Prompt: *The original and backup keys must be plugged into USB port all the time during the process of making backup key.*



Important Statement: *Make sure that you have removed any other USB device except for mouse and keyboard, otherwise Returnstar will not undertake any compensation responsibilities for any possible consequential harmful results.*