

Returnstar PC E-Lock

Full Capability V9.0

User Manual



Copyright(C) 2003-2007 Returnstar Electronic Information Co., Ltd.

Web: <http://www.recoverystar.com>

Tel: +86-591-83385086, 87274373

Fax: +86-591-87274383

E-mail: master@recoverystar.com

Important Statements:

1. Use this product strictly according to detailed operation instruction in this User Manual so as to ensure proper use. Please read the instruction thoroughly to save the installation time.

2. If this product is defective, please return it to the appointed agent or our company, together with your original sales receipt or invoice for replacement.

3. Returnstar Electronic Information Co., Ltd. is not liable for any consequential, incidental or indirect damages (including damages for indirect personal injury, loss of business profits, business interruption, loss of business information and the like) arising out of the use or inability to use this product.

4. The product includes enclosed software, later issue and update as well as correlative electronic documents and printing material. By installing, copying, downloading, visiting or using this product in any way, you agree to the terms and conditions of all the clauses in this user manual. The agreement on these clauses has the same effect as one signed through formal negotiation. You may not use this product unless you have agreed to all the clauses in this user manual

5. Returnstar Electronic Information Co., Ltd. will not accept returns of opened packages.

6. Special Notice:

- Please do not deliberately attack or use other tool software to destroy the product's normal running, or run FDISK/MBR, repartitioning, or low formatting after boot from FD or CD. Otherwise this company assumes no liability for all losses arising herefrom, express or implied.

- Please do not apply in the important occasions such the important network service as the satellite launch, the missile guide, the military control, the national secret, etc, without authorization of Returnstar Electronic Information Co., Ltd. Otherwise this company assumes no liability for all losses arising herefrom, express or implied.

- Regular backup of important data is still necessary when using this product. Returnstar Electronic Information Co., Ltd. does not undertake any compensation responsibility for any losses of HD arising from insufficient backup.

Copyright

Your purchasing of this product does not mean Returnstar Electronic Information Co., Ltd. has transferred the Intellectual Property Right. The product (includes but not limited to any trademarks, images, photos, flash, video, recording music, writing and additional procedure, and other relative product), enclosed printing material, and any copies made in authorization of Returnstar Electronic Information Co., Ltd. are products of Returnstar Electronic Information Co. Ltd., and their Intellectual Property are owned by Returnstar Electronic Information Co., Ltd. The name of this product and all its copies are consistent in CD and the manual. The framework, organization and source code of this product are Returnstar's valuable commercial secret and may not be transferred. This product is protected by PRC Copyright Law, related international treaties, laws in the product using country.

No part of the product may be copied, modified, rented, leased, transferred in any ways without the writing permission or authorization of Returnstar Electronic Information Co., Ltd., You are allowed to use one product on one computer only. Any reverses engineering, re-compiling, and decoding of this product, and retrieving the source code of the product by other ways is also prohibited.

Returnstar, Returnstar Jindun, Recoverystar, and PC E-Lock are the registered trademarks of Returnstar Electronic Information Co., Ltd. Any modification of Copyright marks, product names and brand names of this product and its copies is strictly prohibited.

Returnstar Electronic Information Co., Ltd. reserves all rights to charge the fee at anytime for product replacement, revision and update. The information in this document is subject to change at anytime without notice.

Chapter 1 Product Introduction

Returnstar PC E-Lock software is one suite of behavior control and security management product, which is researched and developed by Returnstar Electronic Information Co., Ltd for years of endeavor. It has the following 5 versions:

1. Family Flagship Version: This version is suitable for parent who is not good at computer operations to control their children's computer behavior at home.

2. Family Perfect Version: This version is suitable for administrator (parent) to control their children's computer behavior at home.

3. Finance Version: This version is suitable for financial personnel or common computer users. It is an effective tool in computer behavior control and security management.

4. Commercial Version: This version is suitable for businessmen and other users who have requirements in computer behavior control and security management.

5. Full Capability Version: It integrates all functions of Family Perfect Version and Commercial Version. It is suitable for other consumer group to use in different environments and management habits, and guarantees the effective management of the same computer in different environments.

Returnstar Electronic Information Co., Ltd has become a global leader in the computer behavior control and security management. It is the only one solution provider of the comprehensive and perfect computer behavior control and security management for family, commerce, enterprise, office, internet cafes, school computer lab, factory, network center. These solutions (including PC E-Lock, HDD Lock, Personal Key, Network Alarm System and Network Monitor System) greatly enhance the efficiency of computer behavior control and security management for computer user and administrator, and solve the key problems on computer management which has disturbed PC users all over the world.

This is an installing and operating manual for Returnstar PC E-Lock Full Capability.

Chapter 2 Product Characters

Returnstar PC E-Lock Full Capability Version has the following strong characters:

2.1 Plug & Play, real-time control.

2.2 Easy to install and use. Anyone who knows a little about the computer can acquire the operation in 10 minutes.

2.3 Support Windows 2000/XP/2003/Vista, it is compatible with all hardware and software when installing and using.

2.4 Resist deleting, tracking by special program, uninstalling and modifying the catalogue, file, and the program of the product after it is installed. So you do not worry about that someone will rename, modify, delete, uninstall or decrypt the product.

2.5 Resist deleting the program and terminating its running through registry or task manager. So you do not worry about termination of the running by other people.

2.6 Function validly under Windows OS safe mode.

2.7 Bind PC E-lock with your PC after install, so each PC E-Lock is sole in the world. Exchange to use it is not allowed. It is like that you and your neighbor have each set of lock and key, but your keys can not be exchanged to use.

2.8 Triple protection—PC E-Lock firmware program protection, PC E-Lock hardware protection and password protection;
Dual identification technology—password identification and PC E-lock identification. Completely guarantee computer behavior control and security management. It is of the highest security and reliability.

Chapter 3 Product Install and Uninstall

3.1 System Requirements:

Ensure your PC has the following characters:

- USB 1.1 or above
- 80X86 compatible computer system
- More than 500MB HDD free space, and more than 32MB memory.
- Operating System: Windows 2000/XP/2003/Vista.
- Make sure you have installed LAN Card in the computer.

3.2 Product Install



Important Statement: *The product series has been significantly upgraded. If your version is under V9.0, uninstall it after decrypting the files (folders) and secret disk and then install the new version V9.0.*

Plug PC E-Lock into USB port, and click “*SETUP.EXE*” to install this product. Finish installation according to the prompt.



Caution: *Make sure to plug PC E-Lock into USB port to install, otherwise installation cannot be finished.*

After finishing installing, restart the computer and plug PC E-Lock into USB port. It will automatically popup Product Main Interface, please refer as follows:



Caution: Because of the speciality of the product, any shortcut will not be created either on program menu and desktop in OS, or on [add and remove program] after setup.

3.3 Uninstall

Under the login state, click “SETUP.EXE” to uninstall and then finish it according to the prompt on Uninstall Interface. Please make sure to restart computer after uninstall.

Chapter 4 Product Usage

4.1 Work Mode

This product has two work modes: Administrator Mode and Controlled Mode.

Administrator Mode: With PC E-Lock plugged into USB port, the computer can be used without any limitation. Namely it is under an uncontrolled mode. You can set functions under Administrator Mode.



Caution: "Data Security" and "My Log" can only work under Administrator Mode.

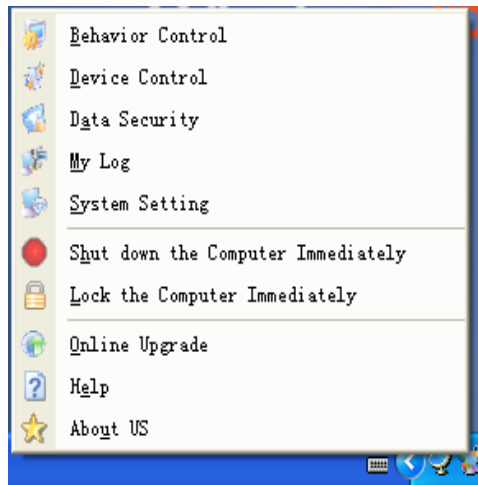
Controlled Mode: After you have pulled out PC E-Lock, the program will control the computer behavior and limit the system utilization according to your setting. Namely it is under Controlled Mode.

Switch Work Mode: Two work modes can be freely switched by plugging and unplugging PC E-Lock.

4.2 Product Login

Plug PC E-Lock into USB port, the system will directly enter into the product main menu, or display small icon in the taskbar at the lower-right corner of the desktop. It means the Login is successful. You can also click the small icon in the taskbar to enter into the product main menu, or right-click the small icon to display the following shortcut menu.



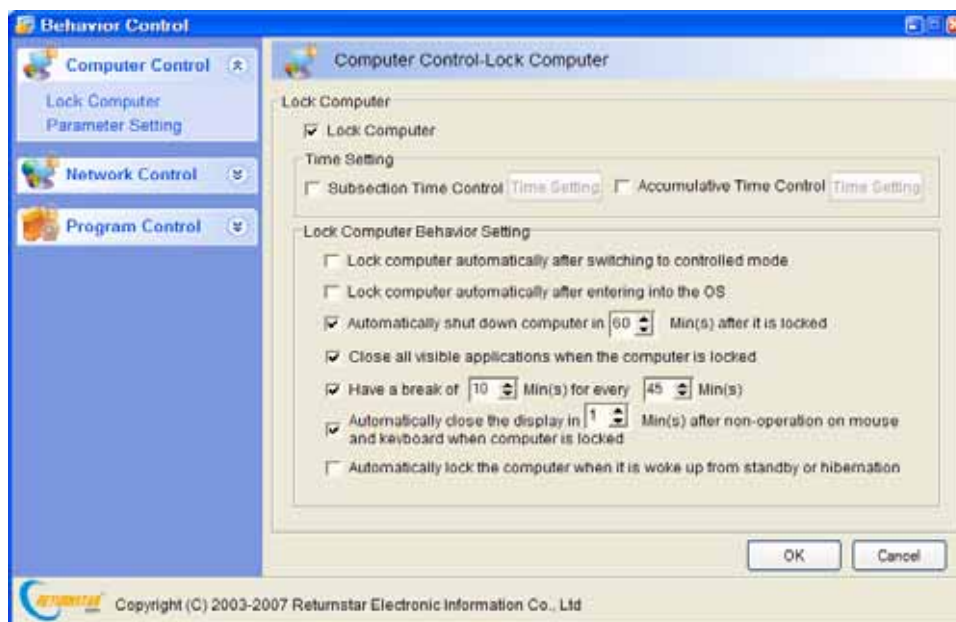


4.3 Behavior Control

Provide functions of “*Lock Computer*”, “*Network Control*” and “*Program Control*”. Effectively control PC start, and the use of network and software under Controlled Mode.

4.3.1 Lock Computer

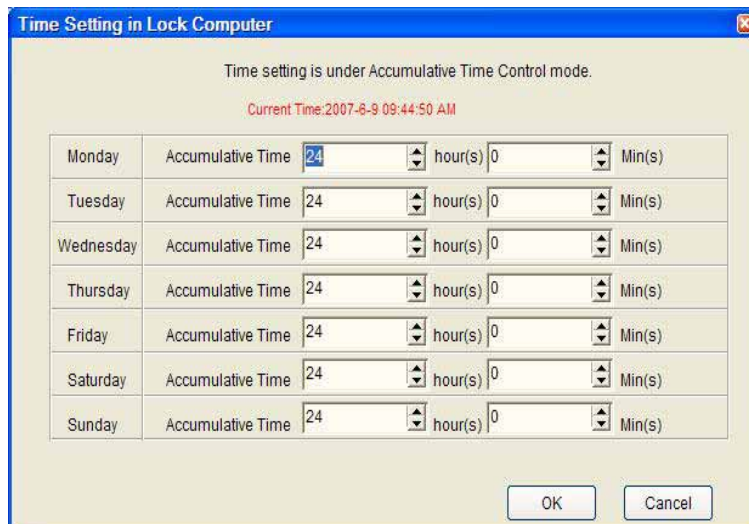
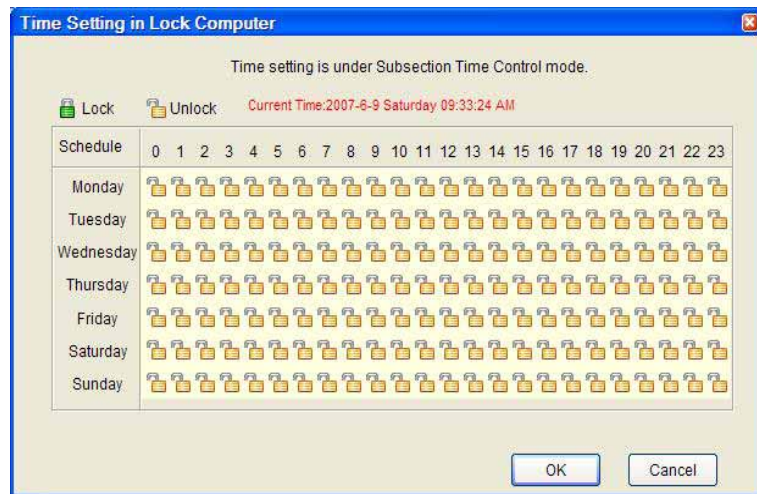
Provide functions of “*Time Setting*”, “*Behavior Setting*”, and “*Parameter Setting*”. You can conduct time setting in “*Lock Computer*” and regulate the computer behavior when or after locking computer; it is convenient for user to manage the computer. Please refer as follows:



4.3.1.1 Time Setting

Control the computer according to your Subsection and Accumulative Time

setting here. The system default is “Unlock” all the time, and the default Accumulative Time is 24 hours per day.



Prompt: If the Subsection Time Control and Accumulative Time Control are set simultaneously, both of them will work. The rule is obeyed in the settings referred to the Subsection Time Control and Accumulative Control.

4.3.1.2 Behavior Setting

Set the conditions of automatically locking the computer and the computer behaviors when or after it is locked. It is a very important measure for Behavior Control.

Lock computer automatically after switching to Controlled Mode: Once the function is selected, the computer will be automatically locked after unplugging PC E-Lock. The system default is “Disabled”.

Lock the computer automatically after entering into the OS: Once the function is selected, the system will automatically lock the computer after entering OS. The system default is *“Disabled”*.

Automatically shut down computer in [] minutes after it is locked: Once the function is selected, computer will automatically turn into PC E-Lock Screensaver after locking the computer at any time or in any way, and shut it down in 0-60 minutes. The system default is 60 minutes and *“Enabled”*.

Close all visible applications when the computer is locked: When the computer is locked, all open applications at the taskbar will be closed. The system default is *“Enabled”*.

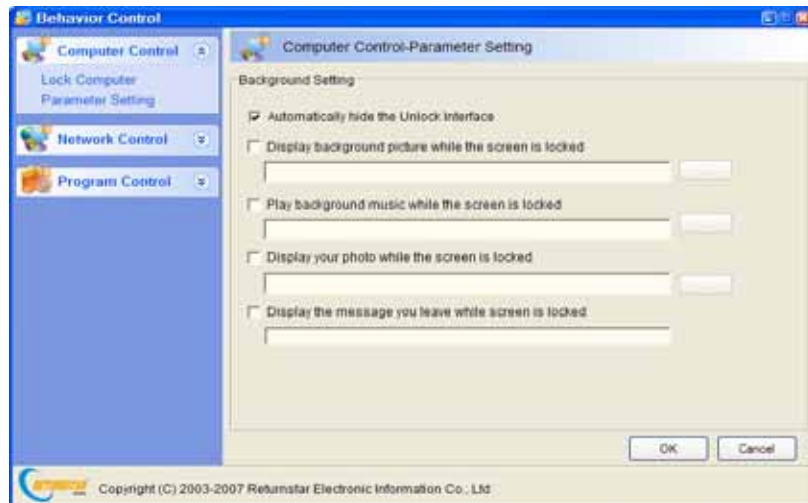
Have a break of [] minutes for every [] minutes: To protect eyesight and adjust the sitting posture, 1-30 minutes break will be made for users when using computer for every 1-90 minutes. The system default is *“Have a break for 10 minutes for every 45 minutes”*. Once the using time ends, it will automatically turn into the PC E-Lock Screensaver. At that time, if someone forces to shut down the computer, it will automatically turn to the PC E-Lock Screensaver after being restarted. When the break time is over, computer will return to the available state automatically. The system default is *“Enabled”*.

Automatically close the display in [] minutes after non-operation on mouse and keyboard when computer is locked: When the computer is locked, it will automatically close the display in 1-60 minutes after non-operation on mouse and keyboard in order to protect the display. User who would like to use the computer just needs to move the mouse slightly or press the keyboard, system will automatically turn to PC E-Lock Screensaver. The system default is *“Enabled”* and *“one minute”*.

Automatically lock the computer when it is woke up from standby or hibernation. At that time, if someone forces to shut down the PC, it will automatically turn to the PC E-Lock Screensaver after being restarted. The system default is *“Disabled”*.

4.3.1.3 Parameter Setting

Set the Background character of PC E-Lock Screensaver which appear when the computer is locked, such as *“Play background music”*, *“Display administrator’s photo and message information”* etc. Please refer as follows,



Automatically hide the Unlock Interface: After locking computer, the system will automatically turn into the PC E-Lock Screensaver. The Unlock Dialog Box will be automatically hidden. Move the mouse slightly or press the keyboard, the system will automatically display the Dialog Box when user would like to unlock and use the computer. The system default is *“Enabled”*.

Display background picture while the screen is locked: Set your background picture as the PC E-Lock Screen Saver Interface. To avoid pattern distortion, the user had better choose the picture size according to your display resolution. We provide some delicate background patterns for download in our website, including 1024x768 and 800x600 image size. The system default is *“Disabled”*.

Play background music while the screen is locked: When computer is locked, the system will play your set background music circularly with the PC E-Lock Screen Saver Interface appeared. Only “.mid” file of music is supported. We provide some euphonic background music for download in our website. The system default is *“Disabled”*.

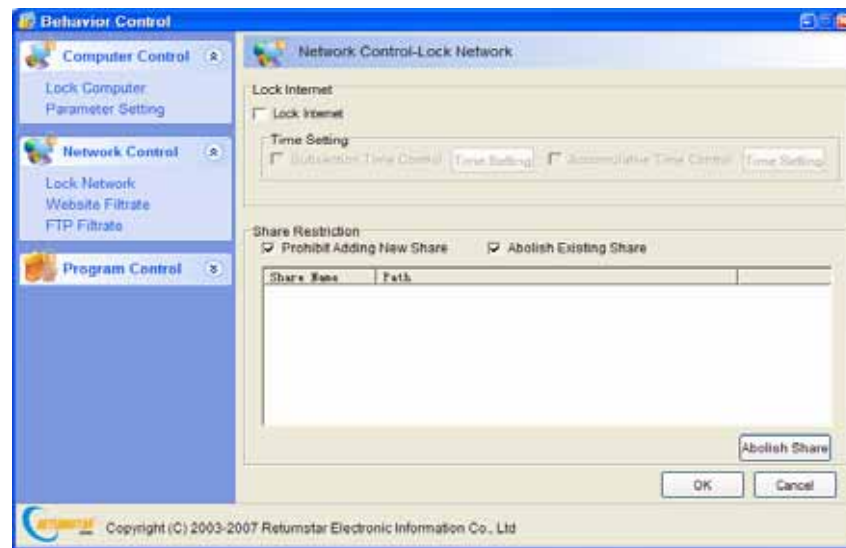
Display your photo while the screen is locked: Display your photo on PC E-Lock Screensaver Interface. The photo size: 80 X 70 pixel. The system default is *“Disabled”*.

Display the message you leave while the screen is locked: Display the rolling message you leave on the PC E-Lock Screen Saver Interface. The system default is *“Disabled”*.

4.3.2 Network Control

Provide functions of *“Lock Network”*, *“Filtrate Website”* and *“Filtrate FTP”*. Effectively control the using of network under Controlled Mode. Please refer as

follows,



4.3.2.1 Lock Network

Provide functions of “*Lock Internet*” and “*Share Restriction*”. On the “*Lock Internet*”, you can *lock internet* according to your Subsection and Accumulative Time Control setting. The system default is “*Disabled*” and “*Unlock*” all time, and the default accumulative time is 24 hours a day.



Prompt: After you have selected “*Lock Internet*”, please restart the computer. Then PC E-Lock will lock all functions related to network automatically. The chatting tools and other programs relative with internet will fail in connecting with internet.

Provide “*Prohibit Adding New Share*” and “*Abolish Existing Share*” functions on the “*Share Limitation*”. Click “*Prohibit Adding New Share*” to forbid adding new share under Controlled Mode. Contrarily, unclick it to permit adding. The system default is “*Enabled*”. Click “*Abolish Existing Share*” to abolish the current existing share from the share list. Firstly select the share item from list, and then click “*Abolish Share*” button. The “*Abolish Existing share*” function is efficient directly under Administrator Mode. The function we designed is for users to directly operate all system shares and avoid possible forgetting because of too much shares.

4.3.2.2 Website Filtrate

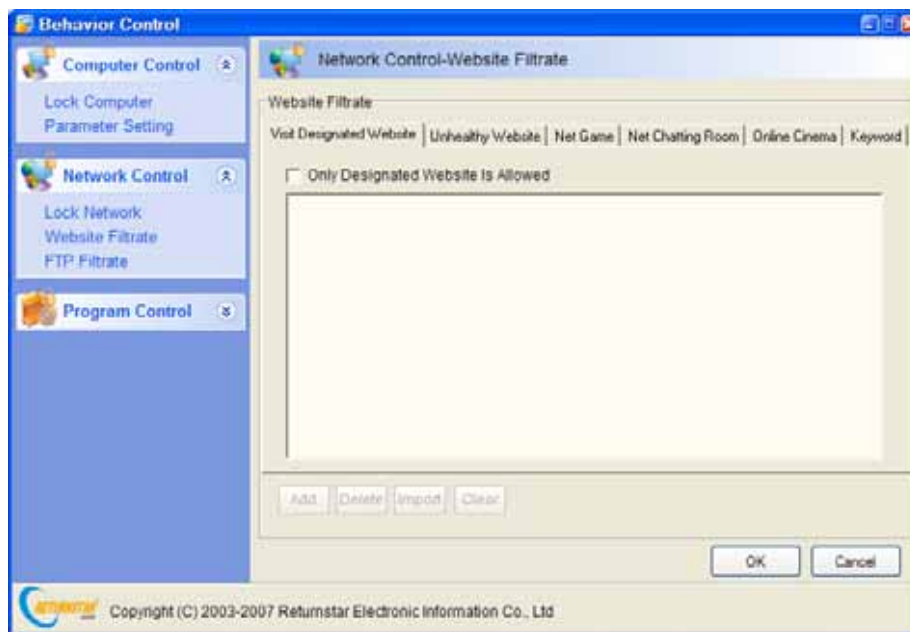
Provide functions of “*Visit Designated Website*”, “*Filtrate Unhealthy Website*”, “*Filtrate Net Game*”, “*Filtrate Net Chatting Room*”, “*Filtrate Online Cinema*” and “*Filtrate Keyword*”. Through website filtration, you can effectively control your visiting websites. Under Controlled Mode, if you select “*Visit Designated Website*”, only the websites from designated website list can be visited; select

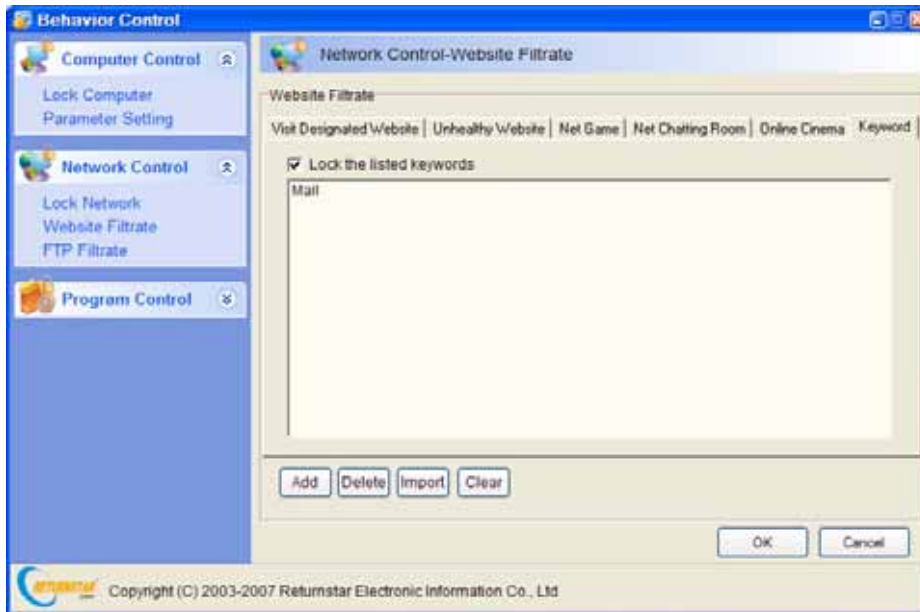
“Filtrate Unhealthy Website”, “Filtrate Net Game”, “Filtrate Net Chatting Room”, and “Filtrate Online Cinema”, the system default is to “Lock the websites which are in the PC E-Lock database and you added to filtrate website list”; select “Filtrate Keyword” and the system defaults is to “Lock websites which are of the keyword character from the keyword list” and the default keyword is “mail” (In that case, mail system in websites would be unavailable for you.). The system default is “Enabled” to “Filtrate Unhealthy Website and Filtrate Keyword”. It as well provides function to import website or keyword in “.txt” file, and one website address or keyword is for one line. Same websites or keywords imported will not be repeated. As follows,



Prompt:

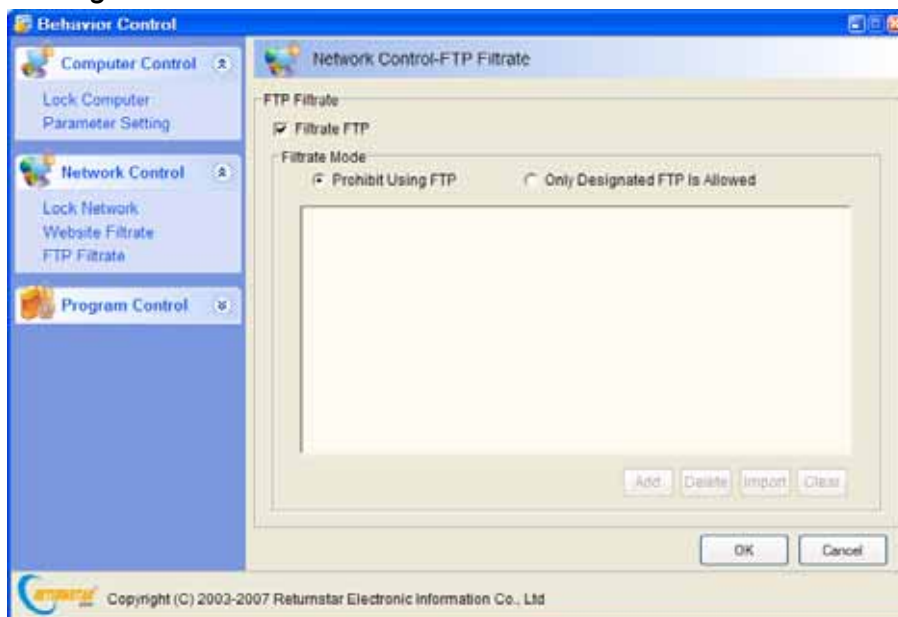
1. The added website must be of the First Class Domain Name. For example, both <http://www.returnstar.com> and <http://www.returnstar.com/index.htm> are the same Class Domain Name. You must type whole website address, namely, “http://www.” not www.returnstar.com or [returnstar.com](http://www.returnstar.com). Then all websites including [returnstar.com](http://www.returnstar.com) will be forbidden or designated.
2. The default internet homepage must be set as “about: blank”.





4.3.2.3 FTP Filtrate

Provide functions of “*Only designated FTP allowed*” and “*Prohibit Using FTP*”. By controlling FTP upload and download, you can effectively control your visiting website under Controlled Mode. The system default is “*Enabled*” to “*Prohibit using FTP*”. As follows:



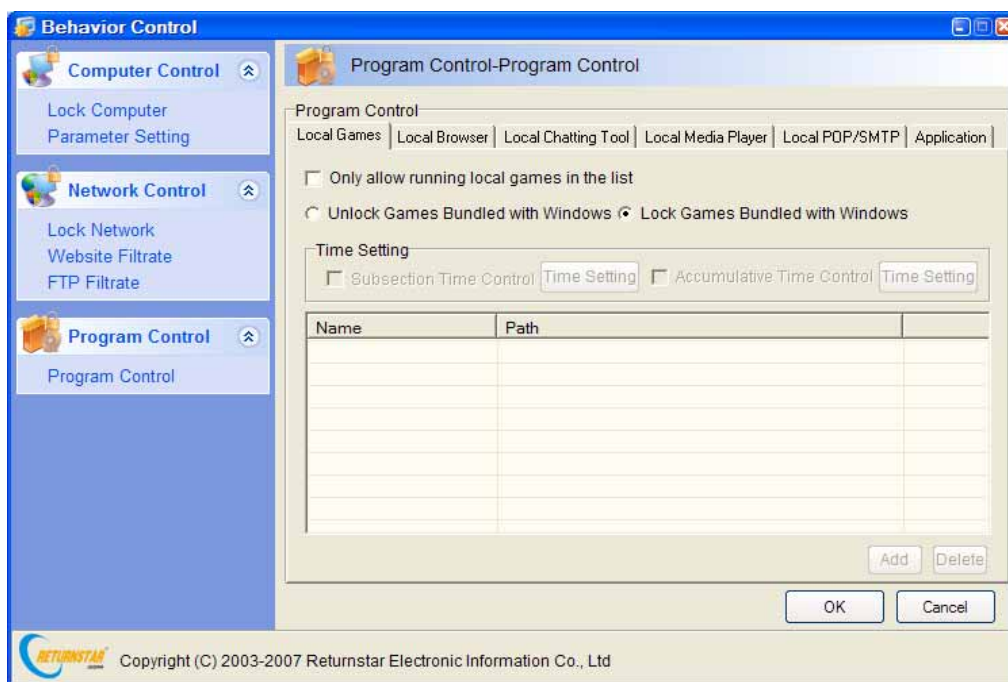
4.3.3 Program Control

Provide functions of “*Program Control*”, “*Local Games Control*”, “*Web Browser Control*”, “*Local Chatting Tool Control*”, “*Local Media Player Control*”, “*Local POP/SMTP Control*”. You can effectively control the program (lock software of computer) under Controlled Mode.

4.3.3.1 Local Games Control

Select the function; you can add the games you permit to play. Provide “*Lock Games bundled with Windows*” and “*Unlock Games bundled with Windows*” functions. (Such design is to meet the user’s requirement to restrict local games but to open games bundled with Windows.). The system default is “Disable” to play local games.

You can “*Lock local games*” according to your Subsection and Accumulative Time Control setting. The system default is “*Unlock*” all the time, and the default accumulative time is 24 hours per day. As follows,



4.3.3.2 Local Browser Control

Select the function and you can add the browsers you permit to use. The system default is “*Enable*” to run IE.

You can control Web Browser according to your Subsection and Accumulative Time Control setting. The system default is “*Unlock*” all the time, and the default Accumulative Time is *24 hours per day*.

4.3.3.3 Local Chatting Tool Control

Select the function and you can add the local chatting tools you permit to use. The system default is “*Disable*” to use local chatting tool.

You can control the local chatting tool according to your Subsection and Accumulative Time Control setting. The system default is “*Unlock*” all the time and the default accumulative time is *24 hours per day*.

4.3.3.4 Local Media Player Control

Select the function and you can add the local media players you permit to use. The system default is “*Disable*” to use local media player.

You can control the local media player according to your Subsection and Accumulative Time Control setting. The system default is “*Unlock*” all the time, and the default accumulative time is *24 hours per day*.

4.3.3.5 Local POP/SMTP Control

Select the function and you can add the local POP/SMTP you permit to use. The system default is “*Disabled*” to use local POP/SMTP.

4.3.3.6 Application Control

Select the function and you can add the applications you permit to use. The default is enabling “program bundled with Windows and Office software etc (except games bundled with Windows)”. Click “*Import Installed Program*” to search the installed programs on the computer automatically, and control the applications according to your requirements. Thus it can effectively control the software use under Controlled Mode.



Prompt: You also can add shortcut of any program for program control.

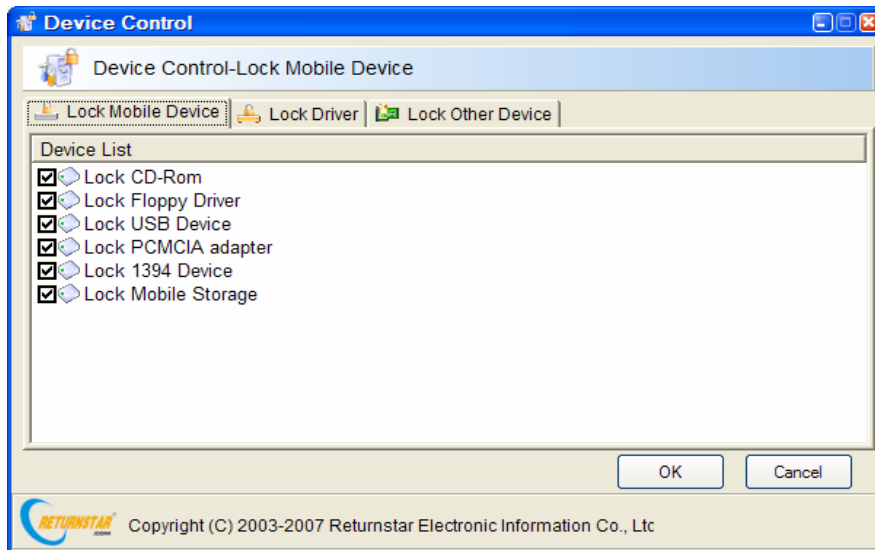
4.4 Device Control

Provide functions of “*Lock Mobile Device*”, “*Lock Drive*” and “*Lock Other Device*”. With these functions, you can effectively control the hardware using under Controlled Mode. Select devices which you need to lock from provided hardware list then click “*OK*” to save.

4.4.1 Lock Mobile Device

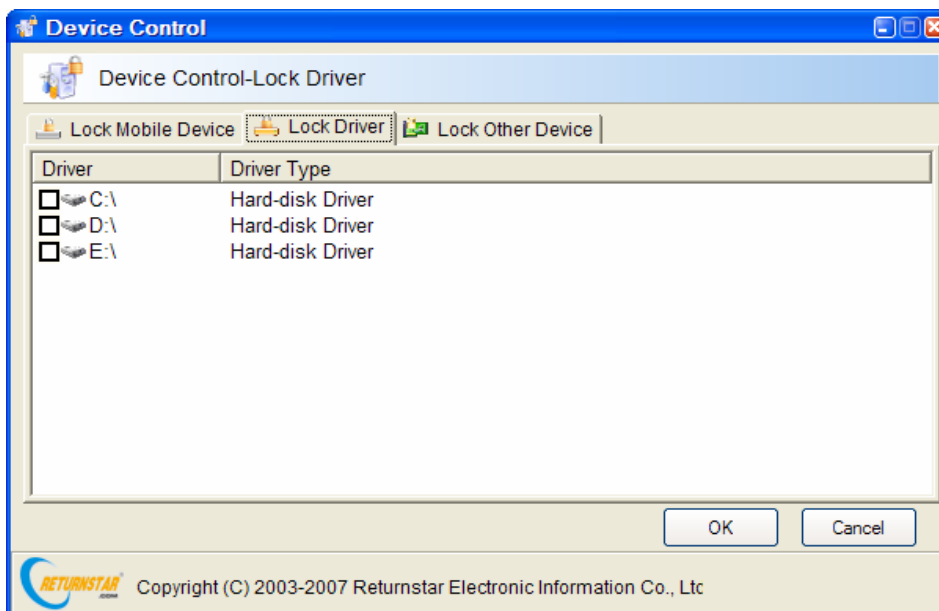
Provide “*Lock CD–Rom*”, “*Lock Floppy Drive*”, “*Lock USB Device*”, “*Lock*

PCMCIA Adapter”, “Lock 1394 Device”, and “Lock Mobile Storage” etc. Here you can effectively control the computer to install or copy the adult, violent or unhealthy software, games, programs and files through such devices and avoid virus, porn-information intrusion and secret file revealed under Controlled Mode. The system default is “Lock all devices”. As follows,



4.4.2 Lock Driver

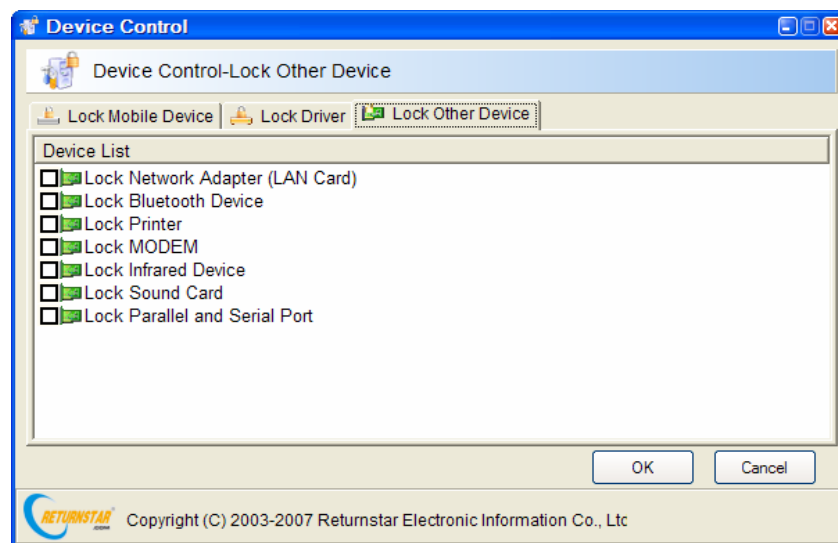
Provide a list of all current drivers and extended drivers connected with PC to select. As follows,



4.4.3 Lock Other Device

Provide functions of “Lock Network Adapter (LAN card)”, “Lock Bluetooth

Device”, “Lock Printer”, “Lock MODEM”, “Lock Infrared Equipment”, “Lock Sound Card”, “Lock Parallel and Serial Port” etc. As follows,



Prompt: No matter which equipment you select, we are setting to unlock any kinds of keyboard and mouse (USB, parallel and serial port or wireless).

4.5 Data Security

Provide functions of “Data Encrypt”, “My Secret Disk” and “Data Crush”. By Data Security, the possibilities of revealing, modifying and deleting the secret data will be effectively removed.

4.5.1 Data Encrypt

Provide two different encrypt methods: “Local Encrypt” and “Mobile Encrypt”. As follows,

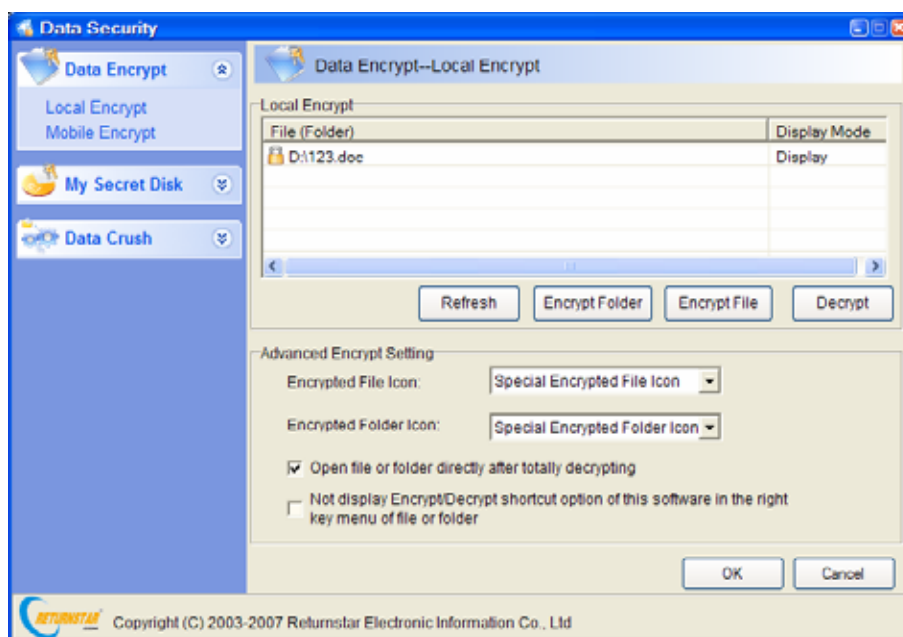
4.5.1.1 Local Encrypt: It is of the highest security.

- Encrypted file or folder will be unable to open or decrypt, when it is renamed or copied to other places.

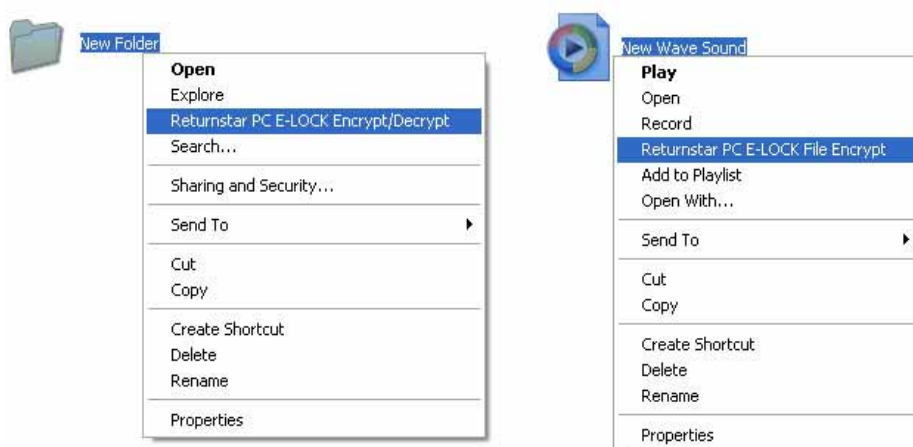
- Encrypted file or folder can still be found and opened or decrypted from encrypted file (folder) list on the “Data Encrypt” Main Menu (see the below figure), after it is deleted.

- If the encrypted file or folder has been cut, you are unable to open or decrypt them in the new path, but can still find to open or decrypt it from encrypted file (folder) list on the “Data Encrypt” Main Menu (see the below figure). It can

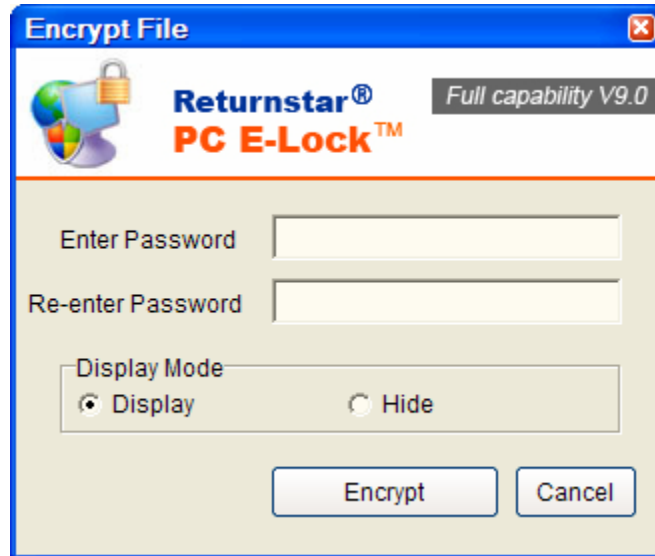
effectively prevent others from using, deleting or modifying the storage path or copying your data in the computer.



Provide an item list for encrypted file (folder). You can add the item of file (folder) which you need to encrypt to the list (which shows the path and display mode of encrypted file or folder, etc.) by selecting “Add File” or “Add Folder”. You can move the mouse to the file or folder which you need to decrypt in the list and click “Decrypt” then input your password in the popup box. Then the file or folder will be open or decrypted. You are also able to encrypt or decrypt the file or folder by clicking “Encrypt” or “Decrypt” shortcut option on the right- key menu of file or folder in the explorer.



“Local Encrypt” has two different display modes: *Display* and *Hide*. It means the encrypted file or folder will be displayed or hidden on the Windows explorer. The system default is “Display”.



Cautions:

- *If you adopt "Hide" to display the file or folder by "Local Encrypt", you must decrypt it on the "Data Encrypt" Main Menu (see the above figure) since it can not be found on the explorer.*
- *After reinstalling OS, all encrypted files or folders will keep the password you set and stay in encrypted state. You are able to decrypt them when re-install the product.*
- *The encrypted folder can not be in the partition where you will re-install OS, otherwise it will be deleted when re-install.*
- *After uninstalling PC E-Lock, the previously encrypted folder is unable to decrypt, moreover keeps encrypted. You are able to decrypt them when re-install the product.*

Design some parameters for users' convenience as follows,

Encrypted File Icon: Provide three different icons.

- Windows Standard File Icon
- Special Encrypted File Icon
- Customized File Icon (The format must be .ICO)

The system default is "*Special Encrypted File Icon*".



Encrypted Folder Icon: Provide three different icons.

- Windows Standard Folder Icon
- Special Encrypted Folder Icon
- Customized Folder Icon (The format must be .ICO)

The system default is “*Special Encrypted Folder Icon*”.



Not display Encrypt/ Decrypt shortcut option in the right- key menu of file or folder: Prevent others from knowing you have installed the product. The system default is “*Display Encrypt/ Decrypt shortcut menu*”.

Open file (folder) automatically after it is decrypted: The system will automatically open the file or folder after it is decrypted. The system default is “*Open*”.

4.5.1.2 Mobile Encrypt

The file or folder encrypted by Local Encrypt is unable to move. So you must use Mobile Encrypt to encrypt the file or folder when you need to move it. It can ensure security of moving file and folder. The mobile-encrypted file or folder is of the following characteristics:

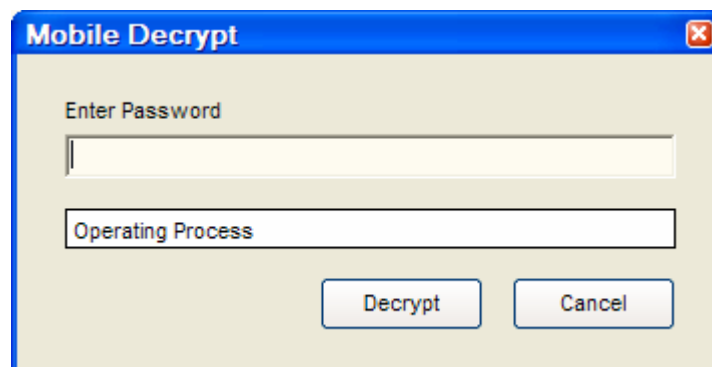
- The encrypted package which has been mobile encrypted is in “*. EXE” format. The file can be deleted, copied, moved to other path or other computers while keeping encrypted.
- Copies of the encrypted package or the moved encrypted package can be open or decrypted in a computer without installing PC E-Lock.



Click “Add File” or “Add Folder” and select the file or folder which you need *Mobile Encrypt* in the popup explorer (The file or folder path will display on the mobile encryption item). Select “Delete the original file or folder after it is mobile encrypted” or not as you wish (system default is “Delete”). Then click “Mobile Encrypt” and input your password, the file or folder would be mobile encrypted. As follows,



Double-click the mobile encrypted package on the system Explorer, it will automatically popup the “Mobile Decrypt” Box then input your password to decrypt. As follows,



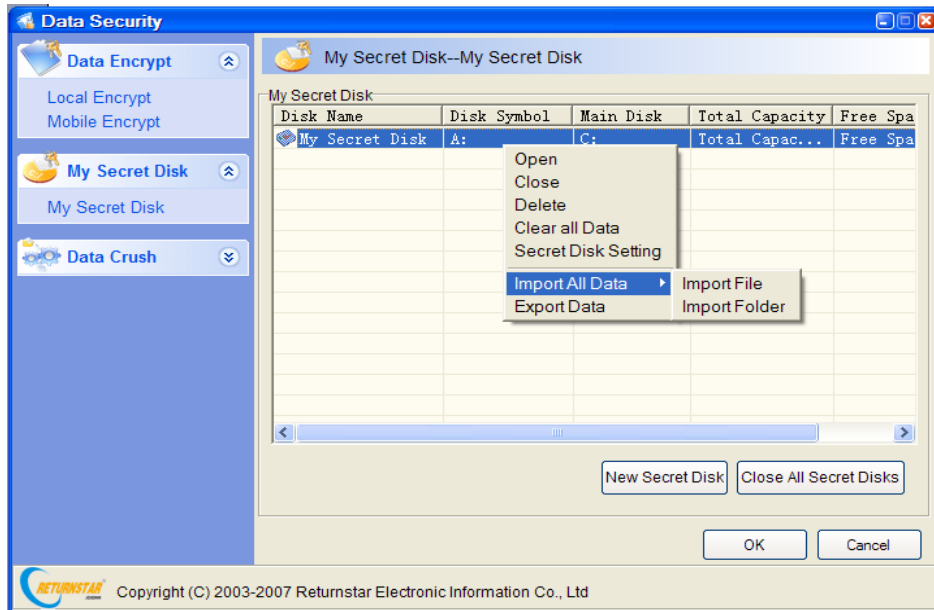


Prompt: (Applicable for Local Encrypt or Mobile Encrypt)

- *The encrypted file is valid under safe mode,, DOS and other operating systems.*
- *The encryption function adopts the multiple encryption methods which combine our exclusive developed encryption technology with the current leading multiple encryption technology. No matter who is proficient at computer or whichever tools are used, it can not be decrypted. Therefore you must bear your password in mind.*
- *Please do not encrypt the folders such as "Windows", "Program Files", and "SYSTEM32" etc which are needed by system. Otherwise it is possible to cause the system error.*
- *The encrypted file or folder is unable to copy, read and write. So it can prevent the virus and Trojan from ruining and attacking.*
- *The encrypted file or folder is unable to execute, avoiding the potential destroyer using the program. Fox example, some files or folders get new virus, however, anti-virus software only can identify its path but not delete them. You can use the function to lock the file or folder with virus and then kill them after anti-virus software upgrade.*
- *Data Encrypt support any program files such as ".EXE" etc.*
- *If the user locked A file or A folder, then A file or A folder shortcut will be ineffective*

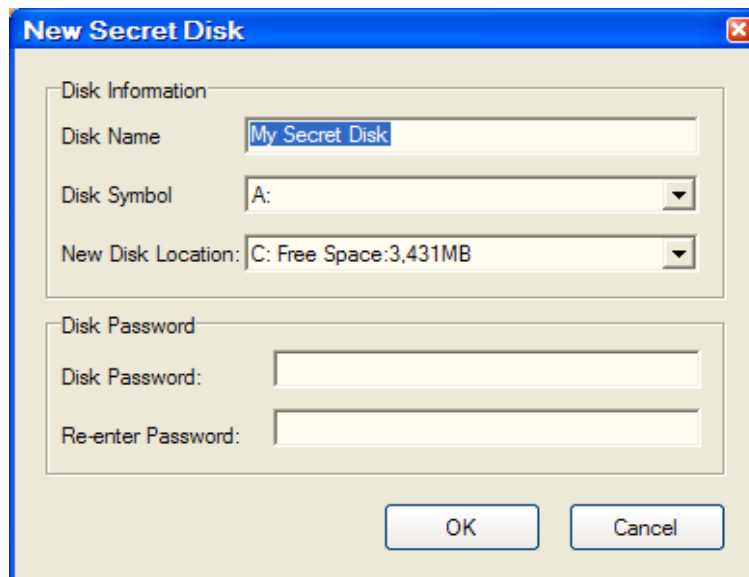
4.5.2 My Secret Disk

It is of the so-called file safe function. You can set up one or more new secret partitions in any partition with free space and copy the confidential data or save them to these secret disks, which can prevent others from seeing the disk or using data in it under Controlled Mode. You can create, set and manage multiple secret disks in it. As follows,



4.5.2.1 New Secret Disk

Click “*New Secret Disk*”, the system will popup the New Secret Disk Setting dialog box. As follows,



Set your new Secret Disk, including “*Secret Disk Name*” (support names in various kinds of language, but these names should not exceed 16 Chinese characters or 32 characters, and the detailed restriction is same as “*WINDOWS partition naming*”, “*Secret Disk Symbol*”, “*New Space on*” (means to select the main disk in which you set up the new secret disk, and we provide all current disk symbol and corresponding free space for your selection), and “*Secret Disk Password*” in this dialog box. Then click “*OK*” to display new Secret Disk item on the “*Secret Disk List*”.



Prompt:

- *The secret disk is one or more partitions you set up in previous partition, which means that it is based on the original partition. We can consider it as “partition in partition”. The space of the original partition will reduce when adding files in the secret disk.*
- *After system reinstall or software uninstall, all the secret disk and data in it will not be destroyed so long as you do not re-partition or change partition format. You will find the secret disk and data after you re-install this software.*
- *You can set up several secret disks. These secret disks can not use the same name and disk symbol, but can be set up on the same partition. All secret disks’ passwords would be different.*
- *No need to format it, after setting up your secret disk. The partition is in the same format as the previous partition.*

Provide secret disk list on “*My Secret Disk*” setting Interface, which lists all current established secret disk items (displaying Secret Disk Name, Secret Disk Symbol, Main Disk, Used Space, and Free Space etc.). Move the mouse to the secret disk item on the list and right-click it, you can see the pull-down menu then select the following options to operate the secret disk.

4.5.2.2 Open

Click “*Open*” and input your password in the popup dialog box. The secret disk explorer will automatically open the corresponding secret disk. You can operate them in the secret disk explorer as in the system explorer. You will find the secret disk symbol on the OS explorer.



Important statement: *The deleted files or folders in the secret disk will never be in the system’s Recycle Bin. Such design is to guarantee your private data security. The deletion of files or folders in secret disk is like “Data Crush”. (Refer to the next section “Data Crush”)*

4.5.2.3 Close

Click “*Close*” (or switch to Controlled Mode) the Secret Disk symbol will disappear in Windows explorer.

4.5.2.4 Delete

Click “Delete” and input your password in popup dialog box to delete the disk.



Important Statement: After deleting the secret disk, the data in it will be crushed and not exist on the Recycle Bin. Such design is to guarantee your private data security. The secret disk is deleted like “Data Crush”. (Refer to the next section “Data Crush”), and then the used space will be released to the main disk.

4.5.2.5 Clear all Data

Click “Clear all Data” and input your password in popup dialog box to clear up all data in the disk.



Important statement: After clearing up data in the secret disk, those data will never show up on the Recycle Bin. Such design is to guarantee your private data security. The secret disk is emptied like “Data Crush”. (Refer to the next section “Data Crush”)

4.5.2.6 Secret Disk Setting

Click “Secret Disk Setting” to display the Secret Disk Setup Interface, you can reset the parameter and password.



Prompt: Please confirm that the free space of the new main disk must be larger than the used space of the secret disk before you change the main disk, otherwise the data transfer will fail!

4.5.2.7 Import Data

Click “Import Data” and input your password in popup dialog box, then select the folder or file you want to move on the popup explorer. The folder or file will be cut into the secret disk.

4.5.2.8 Export all Data

Click “Export all Data” and input your password in popup dialog box, then select the catalog you want to move on the popup explorer. All data in this secret disk will be cut into the catalog.

4.5.2.9 Close all Secret Disks

Click “*Close all secret disks*” and all open secret disks will be closed.



Database Encrypt:

- *Backup the database files;*
- *Set up the private secret disk such as Z disk;*
- *Reinstall management software and set the install or database default directory to the private secret disk (Z disk);*
- *When you do not login to the Administrator Mode, the management software will prompt error, and the database is unable to be open. You can use the software normally and open the database when you login to the Administrator Mode.*

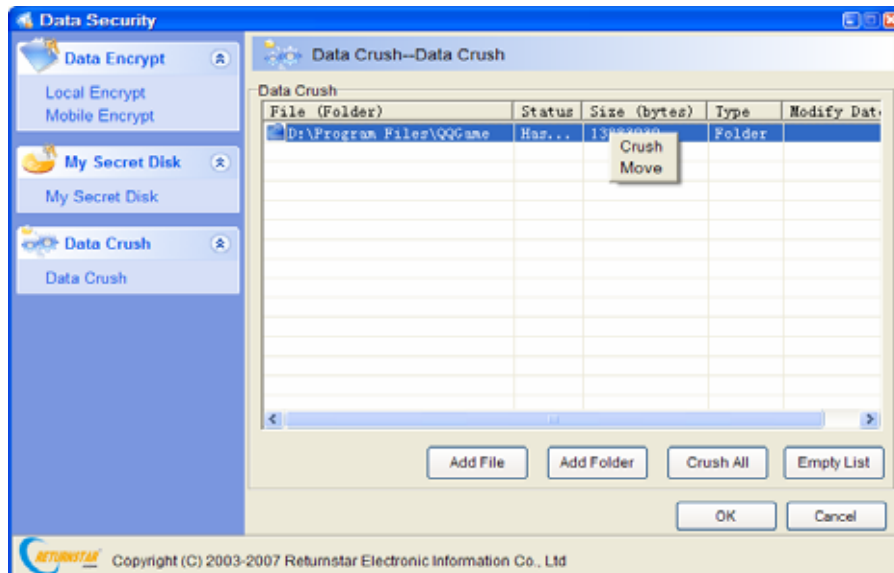


Data Multi-encrypt:

- *mobile encrypt data if you need to move it;*
- *Save the data to my secret disk;*
- *Encrypt the data file;*
- *Encrypt the catalog where data file is again;*
- *After that your data has multiple protections. No one can guess your password easily, and say nothing of decoding. Certainly you can also use the compress software such as WINRAR, etc. to compress and encrypt again.*

4.5.3 Data Crush

Provide item list of the file (folder) which is to be crushed. You can select “*Add file*” or “*Add folder*” to add the file (folder) on the list (displaying Path, Status, Size, Type, Time etc of file or folder) . Move the mouse to the file or folder which you want to crush in the list and right-click to appear the pull-down menu, and then click “*Crush*” to crush the file or folder, or click “*Move*” to move the file or folder item from the list. Click “*Crush All*” at the lower corner of list to crush all files or folders. Click “*Empty List*” to remove all files or folders from the list. The crushed file or folder will display “*Crushed*” on the list as follows,



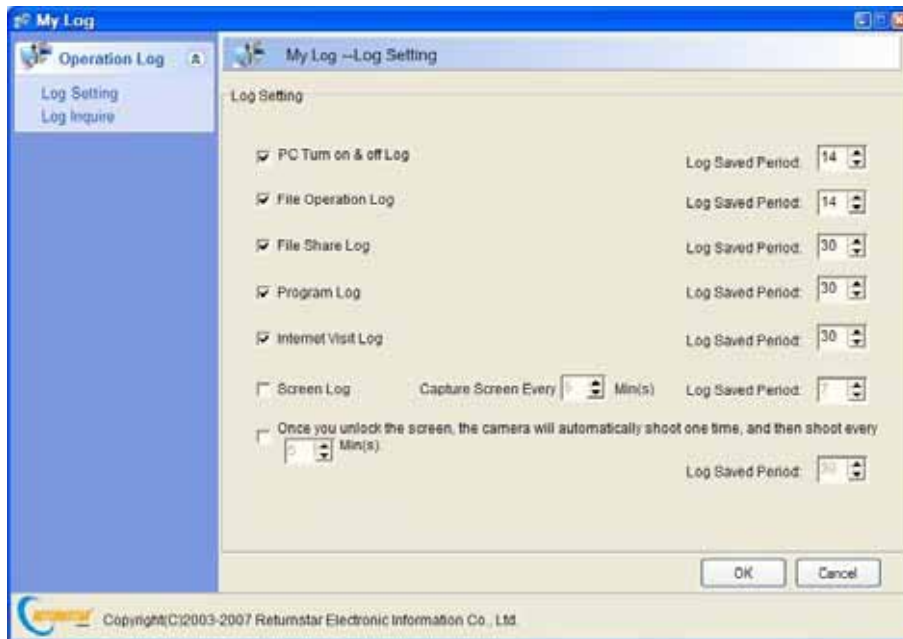
Important Statement: Data Crush function can not only delete the file and folder, but also clear up the file and folder's information on the magnetic track thoroughly. The crushed file or folder can't be recovered, even using the "Final Data" tool. Any behaviors trying to find out and recover the lost information will fail, so you should be cautious when executing the operation.

4.6 My Log

Provide "Setting", "Inquire", "Clear" and "Export" functions for "Start PC Log", "File Operation Log", "File Share Log", "Program Monitor Log", "Website Monitor Log", "Screen Monitor Log" and "User Monitor Log". By log setting, you can effectively monitor the computer and grasp the administrated user's habit, discover and improve the scientificity and rationality of PC E-Lock management setting under Controlled Mode.

4.6.1 Log Setting

Set the saved period of Monitor Log. As follows:

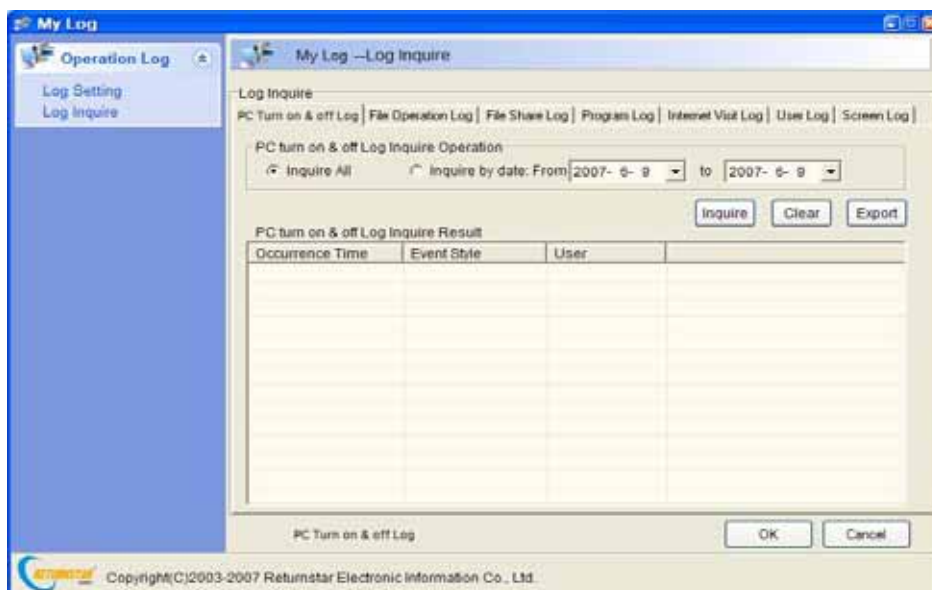


4.6.2 Log Inquire

Provide “*Inquire*”, “*Clear*” and “*Export*” for saved Record of Monitor Log according to the schedule. Click “*Inquire*” button to refresh the record in the current list. Click “*Clear*” button to clear up the current record. Click “*Export*” button to export the record into “.txt” file.

4.6.3 PC Turn on & off Log

Convenient to inquire about the details recorded under Controlled Mode, including PC Start, Logoff and Shutdown Schedule, Login Schedule and Login User Name etc. It can save the record for 0 to 14 days. The system default is 14 days and “*Enabled*”. As follows,



4.6.4 File Operation Log

Convenient to inquire about the details of file operation recorded under Controlled Mode, including Occurrence Time, Affair Style, Details etc, (such as “Copy”, “Delete”, “Move”, “Rename”, “Open”, “Close” etc). It can save the record for 0-14 days. The system default is 14 days and “Enabled”.

4.6.5 File Share Log

Convenient to inquire about the details of file or folder share recorded under Controlled Mode, including Visiting Time, Visitor and Visit Content etc. It can save the record for 0-30 days. The system default is 30 days and “Enabled”.

4.6.6 Program Log

Convenient to inquire about the details of program running recorded under Controlled Mode, including Occurrence Time, Program Name and Affair Type etc. It can save the record up for 0-30 days. The system default is 30 days and “Enabled”.

4.6.7 Internet Visit Log

Convenient to inquire about the details of internet visiting recorded under Controlled Mode, including Occurrence Time, Website Address and Type etc. It can save the record for 0-30 days. The system default is 30 days and “Enabled”.

4.6.8 User Log

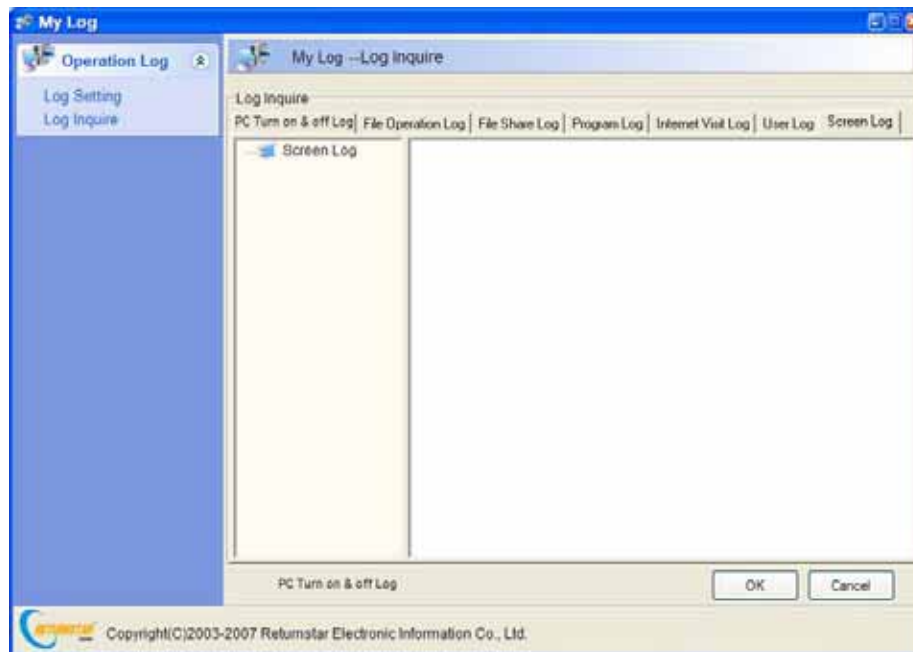
Convenient to inquire about the user’s photograph captured by the system and recorded under Controlled Mode in detail. If someone uses your computer or input the set password to enter into your computer when you leave, the webcam will automatically take a photo of user every other 5-60 minute, and the system default is 5 minutes. It can save the record for 0-30 days. The system default is 30 days and “Disabled”. Since the user’s photos need for large MD space, it is recommended to delete photos by selecting “delete” on the right-key menu of the file or folder in the left file list after you check it every time.



Prompt: For “User Monitor Log”, the webcam must be installed previously and adjusted to your face. Pleas adjust focus in order to capture your face clearly!

4.6.9 Screen Log

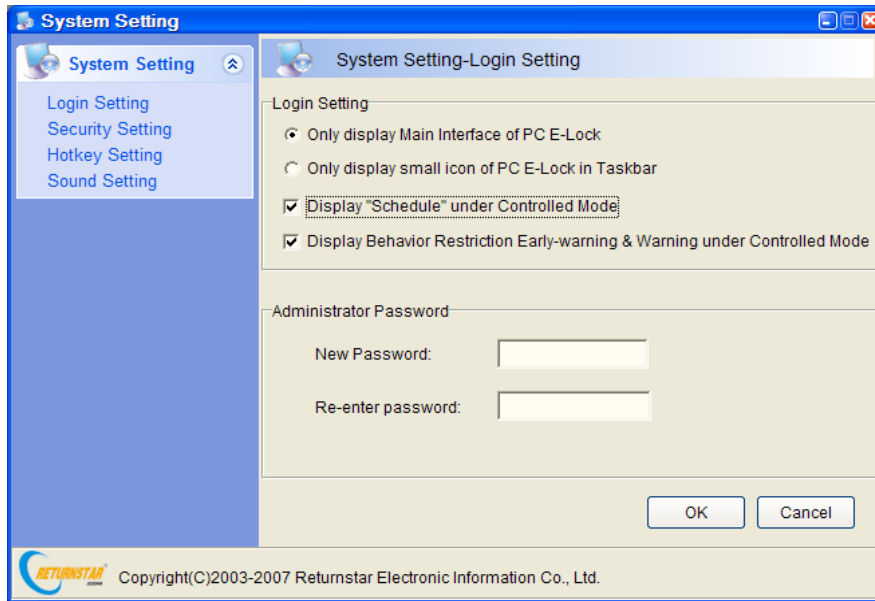
Convenient to inquire about the screen image recorded under Controlled Mode. We can set to capture screen every other 5 to 60 minutes, (the system default is 5 minutes); and the record can be saved for 0-7 days (the system default is 7 days and “*Disabled*”). Since that the screen records need for large MD space, it is recommended to delete records by selecting “*delete*” on the right-key menu of the file or folder in the left file list after every time you check it. As follows,



4.7 System Setting

4.7.1 Login Setting

Set the product login method and administrator password. As follows,



4.7.1.1 The Main Interface of PC E-Lock

Only the Main Interface is displayed when logging in. The system default is *“Enabled”*.

4.7.1.2 The Small Icon of PC E-Lock in Taskbar

Only the small icon is displayed in the taskbar at the lower-right corner of the desktop when login. Recommend to choose this function for your convenience after this product installed. The system default is *“Disabled”*.

4.7.1.3 Display Schedule Tray under Controlled Mode

Under Controlled Mode, the schedule tray will be displayed at the upper-right corner of the screen. Once the user moves the mouse to the upper-right corner of the screen, the schedule tray would appear. By contraries it would automatically hide. This facilitates you to view the computer behavior control schedule. All behavior control related to time will be displayed. The system default is *“Enabled”*.

Schedule	
Lock computer	Unlock
Eyes Protection	00:44:55
Lock Internet	Unlock
Lock Browser	Lock
Lock Game	Lock
Lock Chatting tool	Lock
Lock Media Player	Lock
Lock POP/SMTP	Lock
Lock Program	Lock

4.7.1.4 Display behavior restriction early-warning and warning under Controlled Mode

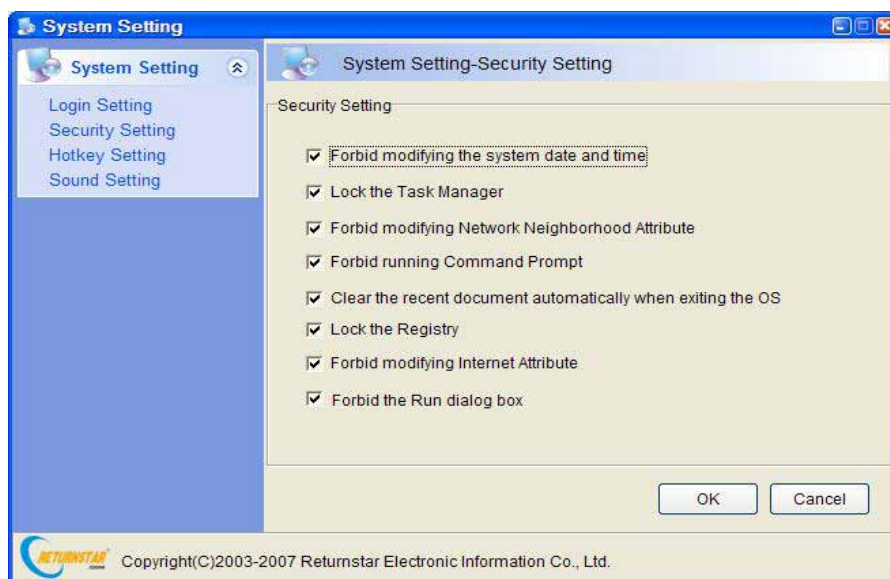
Under Controlled Mode, behavior restriction early-warning and warning will be displayed in the middle of the screen. For example, the system will automatically popup the prompt in 5 minutes before game time ends, under Controlled Mode. In that case, enough time is considered for saving game and the management will be more humanized. Time arrival early-warning prompt is set for 5 minutes except eyesight protection mode for 1 minute. The system default is “*Enabled*”.

4.7.1.5 Administrator Password

Modify the administrator password which is required when to login. (It will be input directly into the lock.)

4.7.2 Security Setting

Restrict others from using the computer system to ensure the system security and PC E-Lock normal working by this setting. As follows,



4.7.2.1 Forbid modifying the system date and time

Forbid modifying the system date and time under Controlled Mode. The system default is “*Enabled*”.



Prompt: Strongly recommend setting up BIOS password to prevent BIOS time from being modified.

4.7.2.2 Lock the Registry

Forbid opening the system registry under Controlled Mode. The system default is “*Enabled*”.

4.7.2.3 Lock the Task Manager

Forbid opening the task manager under Controlled Mode. The system default is “*Enabled*”.

4.7.2.4 Forbid modifying Internet Attribute

Forbid modifying the system Internet Attribute under Controlled Mode. The system default is “*Enabled*”.

4.7.2.5 Forbid modifying Network Neighborhood Attribute

Forbid modifying the Network Attribute under Controlled Mode. The system default is “*Enabled*”.

4.7.2.6 Forbid the Run dialog box

Forbid running the system dialog box under Controlled Mode. The system default is “*Enabled*”.

4.7.2.7 Forbid running Command Prompt

Forbid running the system command prompt under Controlled Mode. The system default is “*Enabled*”.

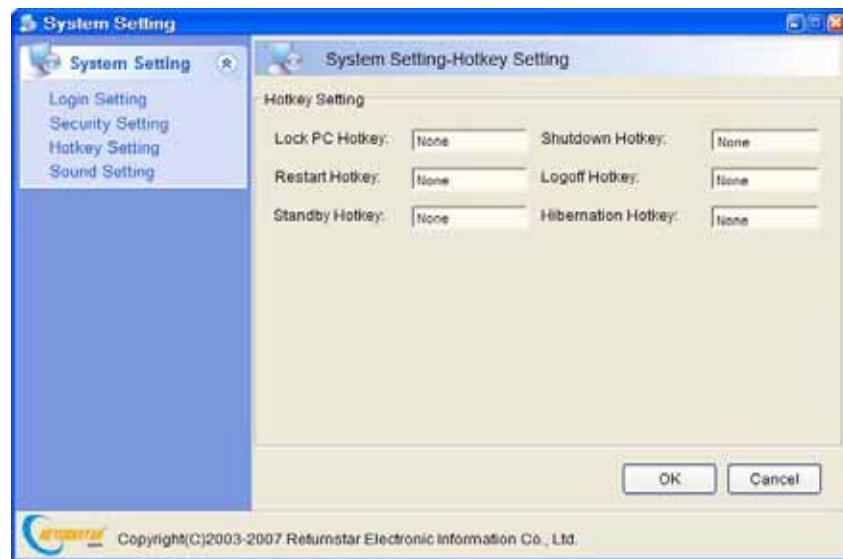
4.7.2.8 Clear the recent document automatically when exiting the OS

Clear the recent documents automatically when exiting the OS. The system default is “*Enabled*”.

4.7.3 Hotkey Setting

Set up handy hotkey to control system, for your convenience. To set up hotkey, press the one which you want to set up into this hotkey box. (If the hotkey has

been occupied to control other program, the setting will be disabled.) As follows:



4.7.3.1 Lock PC Hotkey

Under Administrator Mode, press this hotkey to lock your computer directly until the administrator unlocks it.

4.7.3.2 Shutdown Hotkey

Under Administrator Mode, press this hotkey to shut down your computer directly.

4.7.3.3 Restart Hotkey

Under Administrator Mode, press this hotkey to restart your computer directly.

4.7.3.4 Logoff Hotkey

Under Administrator Mode, press this hotkey to log off your computer directly.

4.7.3.5 Standby Hotkey

Under Administrator Mode, press this hotkey to make your computer standby directly.

4.7.3.6 Hibernation Hotkey

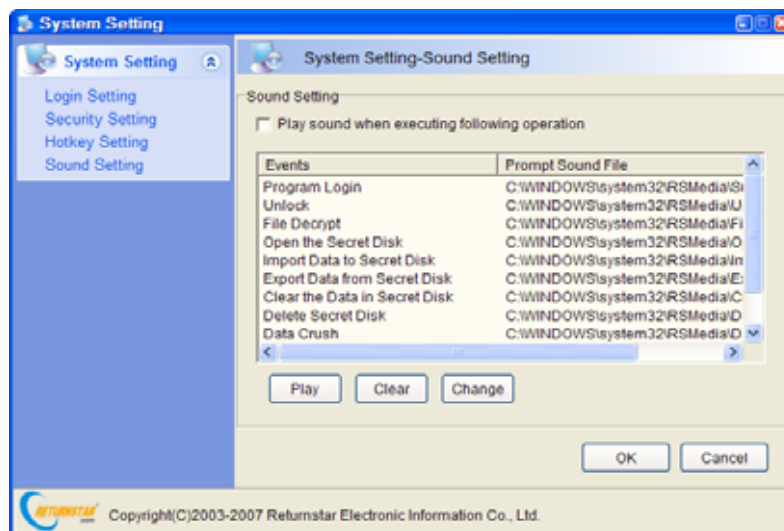
Under Administrator Mode, press this hotkey to make your computer hibernate.



Prompt: If no need to set up the above hotkeys temporarily, press “Space” key in the hotkey box directly.

4.7.4 Sound Setting

Set the sound prompt when some events of PC E-Lock happen (including “Program Login”, “Unlock PC”, “Decrypt File (Folder)”, “Open the Secret Disk”, “Import the Data to Secret Disks”, “Export the Data from Secret Disks”, “Clear the Secret Disk”, “Delete Secret Disk”, “Data Crush”, “Incorrect Password Input” etc). The sound file format only can be “.wav”. The system has provided the default sound for these events.



4.7.4.1 Play

Select the event of which you want to pre-hear the sound prompt from the events list, and then click “Play”, the system will play the corresponding prompt sound for you.

4.7.4.2 Clear

Select the event of which you want to delete the sound from the event list, and then click “Clear”, the system will clear up the corresponding sound for you. You will not hear the prompt sound when the event occurs.

4.7.4.3 Change

Select the event of which you want to change the sound from the event list, and then click “Change”; you can choose the sound in your favor in the popup window.

Chapter 5 Upgrade

We provide two ways to upgrade the product:

- Click “*Upgrade*” option on the main interface or right key menu of small icon in taskbar, and then system will automatically prompt that upgrade package is found and now it is upgrading (subject to version NO. and time of upgrade package). It is unnecessary to uninstall the old version’s software when upgrade.



Prompt: *The function is only provided for registered version.*

- You have to uninstall the old version, and then download the new version to install from our website: www.recoverystar.com if this product has been significantly improved and upgraded.

Chapter 6 Notice

6.1 The product can not be used under the Windows 95, Windows NT 3.51, and Windows NT 4.0.

6.2 All functions of the product can be used separately and multiple set, but please note the function of “*Lock Computer*” takes the priority.

6.3 It is not allowed to install another product of the same model on the same system.

6.4 PC E-Lock cannot be installed in more than one OS if you have several operating systems in your computer. Since you only have one USB Key, if you install PC E-Lock in more than one OS, after you have uninstalled it in one OS, the USB Key will be recovered to its original state, and thus you cannot uninstall PC E-Lock in another OS.

6.5 Please reinstall the product under newly reinstalled operating system at once, in order to guarantee normal using.

6.6 The PC E-Lock once installed will be bound with your PC, so each one

installed is the sole one in the world. Exchange to use is impossible. It is like that you and your neighbor has each set of lock and key, but your keys can not be exchanged to use.

6.7 One PC E-Lock is for one PC. The PC E-Lock installed is unable to be installed in another PC unless it has been uninstalled

6.8 Please do not touch the metal terminal inside of USB interface by your hand or metal. Keep this product away from water, fire, dropping, pressing, bending, punching, disassembling, high temperature, sunshine, humidity, and anything that will cause damage.

6.9 We designed three passwords for this product: Program Administrator Password, Lock File (folder) Password and My Secret Disk Password. They support blank password at the same time. You must preserve and secure your PC E-Lock and all kinds of password because the password, administrator password, PC E-Lock and your PC are bind together. Strongly recommend: make backup key by PCELockCopy.exe tool.

6.10 Please do not be confused with the PC E-Locks if you administer many sets of PC. It is impossible to unlock the PC by irrelative PC E-Lock, because of the corresponding relationship between PC E-Lock and PC. So it is necessary for you to identify them in numbers. E.g.: You can keep them in different envelop with serial number or mark them.

6.11 You can use USB extend cable or USB HUB to connect this product.



Important Statement: *The product series has been significantly upgraded. If your version is under V9.0, uninstall it after decrypting the encrypted file or folder and then install the new version.*

Chapter 7 FAQ

7.1 Does PC E-Lock software affect other software running after locking the game and internet?

A: It will not affect other software running except some special 2D/3D graph and image processing program.

7.2 Is there any product with similar function in the market at present?

A: There is no similar product with such high security and efficiency in the market at present. Maybe there are some products (pure software / software+ hardware) achieving some functions but with following shortcomings:

- Easy to be decrypted.
- Easy to be uninstalled and deleted by administrator.
- Easy to terminate or delete its program in the registry and task manager.
- Invalid under the safe mode.

Please be cautious to purchase.

7.3 Can the function of lock unhealthy website block the healthy information?

A: It is possible. It is rather difficult to confine the unhealthy information. The information unhealthy or specified to the adult actually exists in the webpage which contains the keywords like "*Female*", "*life*" and "*Make friends*". The product adopts the strict measure to extremely block the adult topic display, together with possible affection to browse news webpage. Regarding this, parents and administrator should see both side of it.

7.4 What to do when PC E-Lock is lost?

A: There is no idea for us if you lose the PC E-Lock without backup key. The new lock can be made only by telling us your administrator password, and sending us the locked PC. For all the passwords, your PC E-Lock, administrator password and your PC are binding together, please be cautious to preserve and secure you PC E-Lock and administer password. It is strong recommended to make backup key by PCELockCopy.exe.

7.5 What can you do if the icon still exists in taskbar after you pulled out

the PC E-Lock?

A: Your PC may be temporarily in the state of hibernation. Logoff current user and re-plug and unplug PC E-Lock; or restart PC and re-plug and unplug PC E-Lock.

7.6 The system could not recognize PC E-Lock when you plug it, how to deal with it?

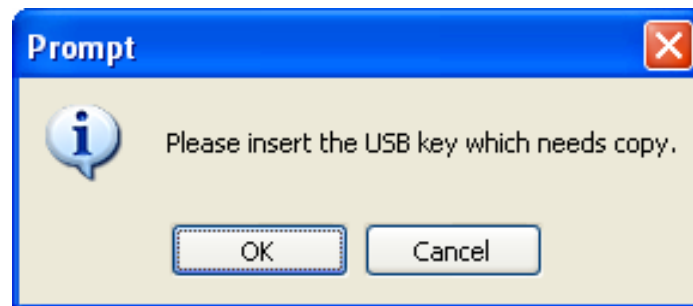
A: ● Please check whether you have set the USB port to “*Enable*” in BIOS. Steps to set BIOS: 1) Press “*Del*” key when you start the computer, and then enter CMOS setting interface; 2) select “*INTERGRATED PERIPHERALS*” option, and press “*Enter*” key to open it; 3) select “*USB Controller*” option, and press “+” or “-”, to set it as “*Enabled*”; 4) save it and exit BIOS setting.

- The USB port is in poor touch or has been destroyed, please try again in another USB ports.
- Your PC system does not work well, please restart the PC and try again.

Appendix: How to make Backup Key

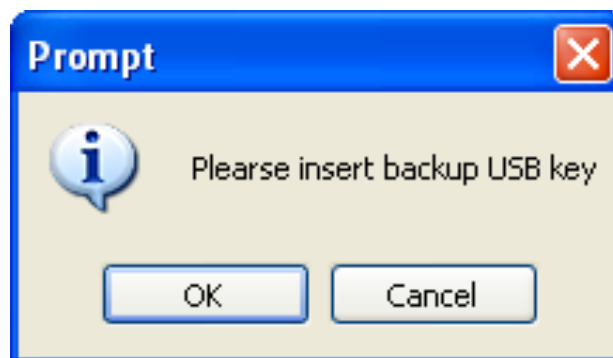
Strongly recommend you to buy one more PC E-Lock of the same type to avoid embarrassment when the key is lost. Use *PCELockCopy.exe* to make backup lock. *PCELockCopy.exe* is green software for making backup PC E-Lock. It can run on CD-Rom directly or you can copy it from HDD Lock category and run it

Click "*PCELockCopy.exe*" and the prompt "Please insert the USB key which needs copy" popup as follows:



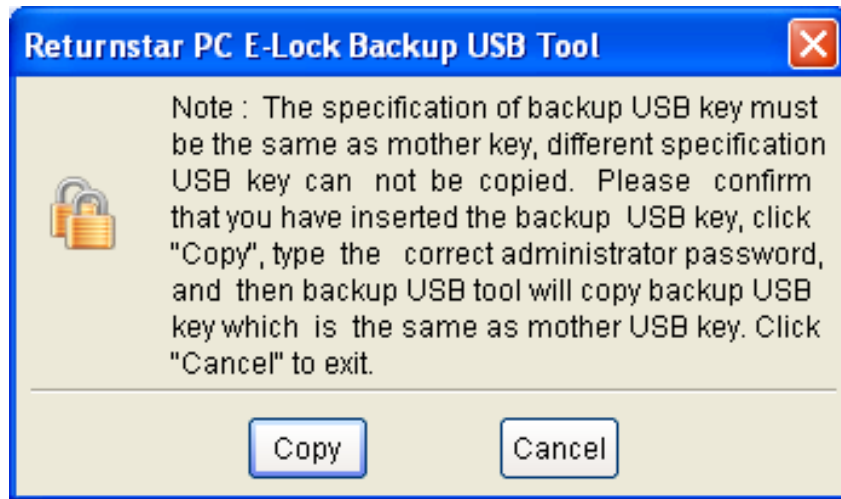
(Prompt Interface One)

Insert USB key that you need to copy and Click "OK", the prompt "*Please insert backup USB key*" will display, as follows:



(Prompt Interface Two)

Insert the backup USB key and click "OK", the Main Interface of making backup key will display as follows:



(Returnstar PC E-Lock Backup USB Tool)

Click “Copy”, and input the correct password in the prompt box “*Please input administrator password*”. Then it will prompt “*Successful Backup*”, and press “OK” to finish backup. PCELockCopy.exe will exit automatically. Remove both keys from USB port one by one in the end.



Prompt: *The backup and original key must be of same model. It will be unable to copy PC E-Lock with a different model. The installed PC E-Lock cannot be used as backup key for other PC E-Lock. Please make the backup key again once you change the administrator password.*



Prompt: *The original and backup keys must be plugged into USB port all the time during the process of making backup key.*



Important Statement: *Make sure that you have removed any other USB device except for mouse and keyboard, otherwise Returnstar will not undertake any compensation responsibilities for any possible consequential harmful results.*