

PC E-Lock Smart Family Perfect V9.0

User Manual



Copyright(C) 2003-2007 Returnstar Electronic Information Co., Ltd.

Web: <http://www.recoverystar.com>

Tel: +86-591-83385086, 87274373

Fax: +86-591-87274383

E-mail: master@recoverystar.com

Important Statements:

1. Use this product strictly according to detailed operation instruction in this User Manual so as to ensure proper use. Please read the instruction thoroughly to save the installation time.

2. If this product is defective, please return it to the appointed agent or our company, together with your original sales receipt or invoice for replacement.

3. Returnstar Electronic Information Co., Ltd. is not liable for any consequential, incidental or indirect damages (including damages for indirect personal injury, loss of business profits, business interruption, loss of business information and the like) arising out of the use or inability to use this product.

4. The product includes enclosed software, later issue and update as well as correlative electronic documents and printing material. By installing, copying, downloading, visiting or using this product in any way, you agree to the terms and conditions of all the clauses in this user manual. The agreement on these clauses has the same effect as one signed through formal negotiation. You may not use this product unless you have agreed to all the clauses in this user manual

5. Returnstar Electronic Information Co., Ltd. will not accept returns of opened packages.

6. Special Notice:

- Please do not deliberately attack or use other tool software to destroy the product's normal running, or run FDISK/MBR, repartitioning, or low formatting after boot from FD or CD. Otherwise this company assumes no liability for all losses arising herefrom, express or implied.

- Please do not apply in the important occasions such the important network service as the satellite launch, the missile guide, the military control, the national secret, etc, without authorization of Returnstar Electronic Information Co., Ltd. Otherwise this company assumes no liability for all losses arising herefrom, express or implied.

- Regular backup of important data is still necessary when using this product. Returnstar Electronic Information Co., Ltd. does not undertake any compensation responsibility for any losses of HD arising from insufficient backup.

Copyright

Your purchasing of this product does not mean Returnstar Electronic Information Co., Ltd. has transferred the Intellectual Property Right. The product (including but not limited to any trademarks, images, photos, flash, video, recording music, writing and additional procedure, and other relative product), enclosed printing material, and any copies made in authorization of Returnstar Electronic Information Co., Ltd. are products of Returnstar Electronic Information Co. Ltd., and their Intellectual Property are owned by Returnstar Electronic Information Co., Ltd. The name of this product and all its copies are consistent in CD and the manual. The framework, organization and source code of this product are Returnstar's valuable commercial secret and may not be transferred. This product is protected by PRC Copyright Law, related international treaties, laws in the product using country.

No part of the product may be copied, modified, rented, leased, transferred in any ways without the writing permission or authorization of Returnstar Electronic Information Co., Ltd., You are allowed to use one product on one computer only. Any reverses engineering, decompiling, and decoding of this product, and retrieving the source code of the product by other ways is also prohibited.

Returnstar, Returnstar Jindun, Recoverystar, and PC E-Lock are the registered trademarks of Returnstar Electronic Information Co., Ltd. Any modification of Copyright marks, product names and brand names of this product and its copies is strictly prohibited.

Returnstar Electronic Information Co., Ltd. reserves all rights to charge the fee at anytime for product replacement, revision and update. The information in this document is subject to change at anytime without notice.

Chapter 1 Product Introduction

Returnstar PC E-Lock software is one suite of behavior control and security management product, which is researched and developed by Returnstar Electronic Information Co., Ltd for years of endeavor. It has the following 5 versions:

1. Family Flagship Version: This version is suitable for parent who is not good at computer operations to control their children's computer behavior at home.

2. Family Perfect Version: This version is suitable for administrator (parent) to control their children's computer behavior at home.

3. Finance Version: This version is suitable for financial personnel or common computer users. It is effective tool in computer behavior control and security management.

4. Commercial Version: This version is suitable for businessmen and other users who have requirements in computer behavior control and security management.

5. Full Capability Version: It integrates all functions of Family Perfect Version and Commercial Version. It is suitable for other consumer group to use in different environments and management habit, and guarantees the effective management of the same computer in different environments.

Returnstar Electronic Information Co., Ltd has become a global leader in the computer behavior control and security management. It is the only one solution provider of the comprehensive and perfect computer behavior control and security management for family, commerce, enterprise, office, internet cafes, school computer lab, factory, network center. These solutions (including PC E-Lock, HDD Lock, Personal Key, Net work Alarm System and Network Monitoring System) greatly enhance the efficiency of computer behavior control and security management for computer user and administrator, and solve the key problems on computer management which has disturbed PC users all over the world.

This is an installing and operating manual for Returnstar PC E-Lock Smart Family Perfect.

Chapter 2 Product Characters

Returnstar PC E-Lock Smart Family Perfect Version has the following strong characters:

2.1 Easy to install and use. Anyone who knows a little about the computer can acquire the operation in 10 minutes.

2.2 Support Windows 2000/XP/2003, it is compatible with all hardware and software when installing and using.

2.3 Resist deleting, tracking by special program, uninstalling and modifying the catalogue, file, and the program of the product after it is installed. So you do not need to worry about that someone will rename, modify, delete, uninstall or dismiss the product.

2.4 Resist deleting the program and terminating its running through registry or task manager while running the product. So you do not need to worry about termination of the running by other people.

2.5 Function validly under Windows OS safe mode.

Chapter 3 Product Install and Uninstall

3.1 System Requirements:

Ensure your PC has the following characters:

- 80X86 compatible computer system
- More than 500MB HDD free space, and more than 32MB memory.
- Operating System: Windows 2000/XP/2003.
- Make sure you have installed LAN Card in the computer.

3.2 Product Install



Important Statement: *The product series has been significantly upgraded. If your version is under V9.0, uninstall it after decrypting the files (folders) and secret disk and then install the new version V9.0.*

Click “*SETUP.EXE*” to install the product, and then finish the setup according to the prompt.

After finishing install, please restart the computer and enter the OS. The product Main Interface will automatically popup, as follows,



Caution: Because of the speciality of the product, any shortcut will not be created either on program menu and desktop in OS, or on [add and remove program] after setup.



Prompt: As the primary password of administrator is blank, please set your password in time.

3.3 Uninstall

Under the login state, click “*SETUP.EXE*” to uninstall and then finish it according to the prompt on Uninstall Interface. Please make sure to restart computer after uninstall.

Chapter 4 Product Usage

4.1 Work Mode

This product has two work modes: Administrator (parent) Mode and Controlled Mode.

Administrator (parent) Mode: The computer can be used without any limitation in this mode, namely it is under an uncontrolled mode. You can set functions of the PC E-Lock software under Administrator Mode.



Caution : "My log" can work only under Administrator (parent) Mode.

Controlled Mode: The product will control the computer and limit the system utilization according to your set parameter in this mode. Namely it is under Controlled mode.

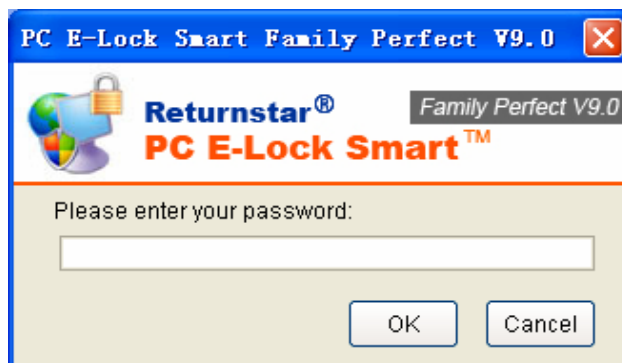
Switch Work Mode: Two work modes can be switched by Login and Logout.

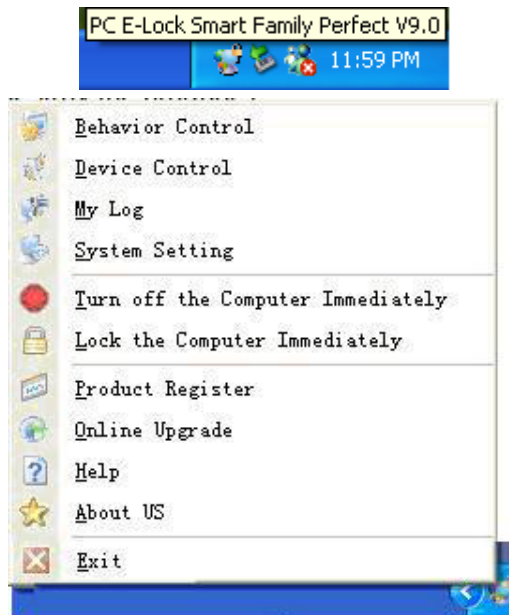


Prompt: when PC E-Lock Smart unregistered is used out of 30 times, the Administrator (parent) Mode will be automatically effective.

4.2 Product Login

Press "CTRL+SHIFT+H", system will automatically popup the Login Window. Input the administrator password in the box, and click "OK" to directly enter into Main Interface, or display small icon in the taskbar at the lower-right corner of the desktop. Login is successful. Or click the small icon in the taskbar to enter into Main Interface, or right-click the small icon to display the following shortcut menu,



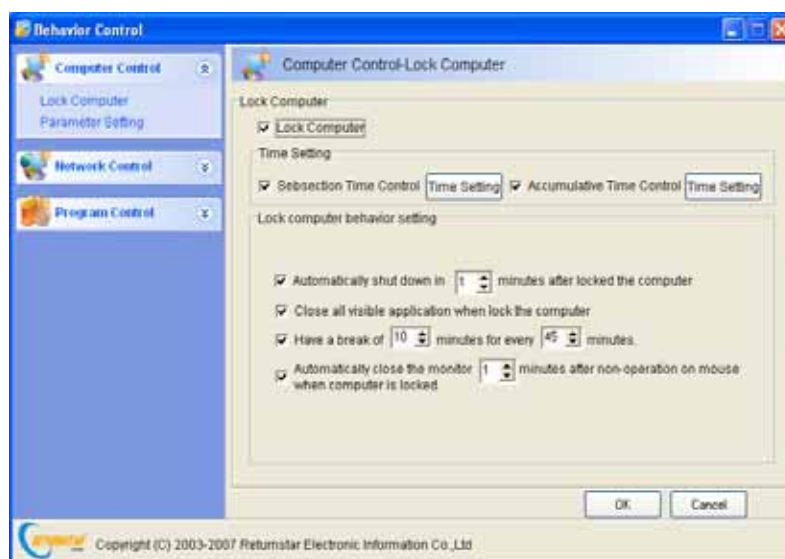


4.3 Behavior Control

Provide functions of “*Lock Computer*”, “*Network Control*” and “*Program Control*”. Effectively control PC start, and the use of network and software under Controlled Mode.

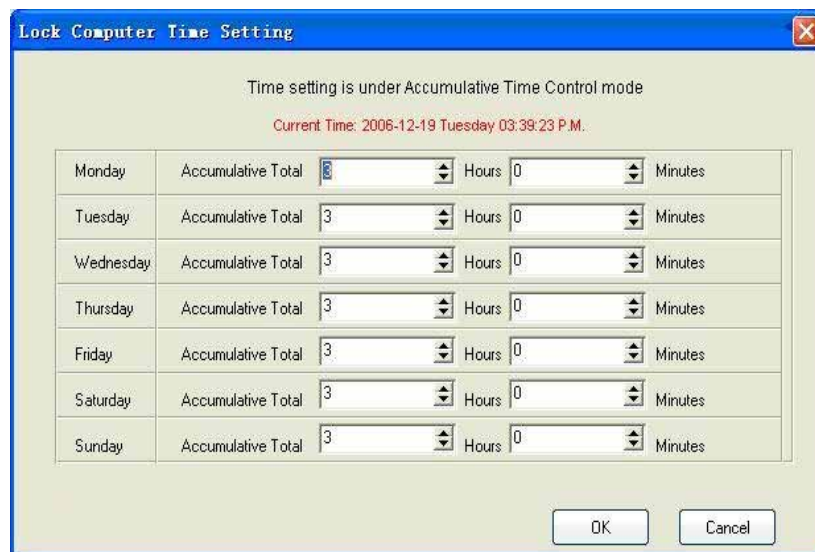
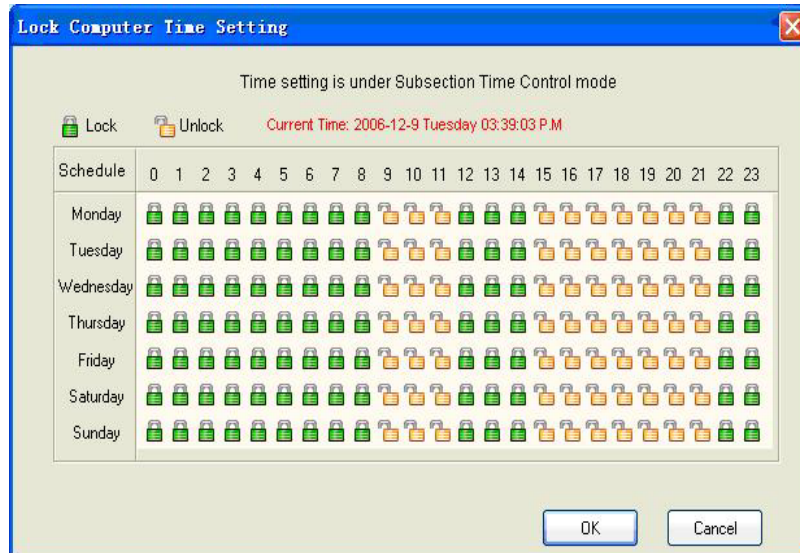
4.3.1 Lock Computer

Provide functions of “*Time Setting*”, “*Behavior setting*”, and “*Parameter Setting*”. You can conduct time setting in “*Lock Computer*” and regulate the computer behavior when or after it is locked; it is convenient for user to manage the PC. System default is “*Enabled*”. Please refer as follows:



4.3.1.1 Time Setting

Control the computer according to your Subsection and Accumulative Time setting here. The system default is to “Lock” from “12:00 to 14:00 and 22:00 to 8.00” everyday, and the accumulative time is 3 hours per day. As follows,



Prompt: If the Subsection Time Control and Accumulative Time Control management are set simultaneously, they will both work. The rule is obeyed in the settings referred to Subsection Time Control and Accumulative Time Control.

4.3.1.2 Behavior Setting

Set the conditions of automatically locking the computer and the computer activities when or after it is locked. It is a very important measure for Behavior Control.

Automatically shut down computer in [] minutes after it is locked: Once the function is selected, computer will automatically turn into PC E-Lock Screensaver after it is locked at any time or in any way, and will be shut down in 1-60 minutes. The system default is 1 minute and " *Enabled*".

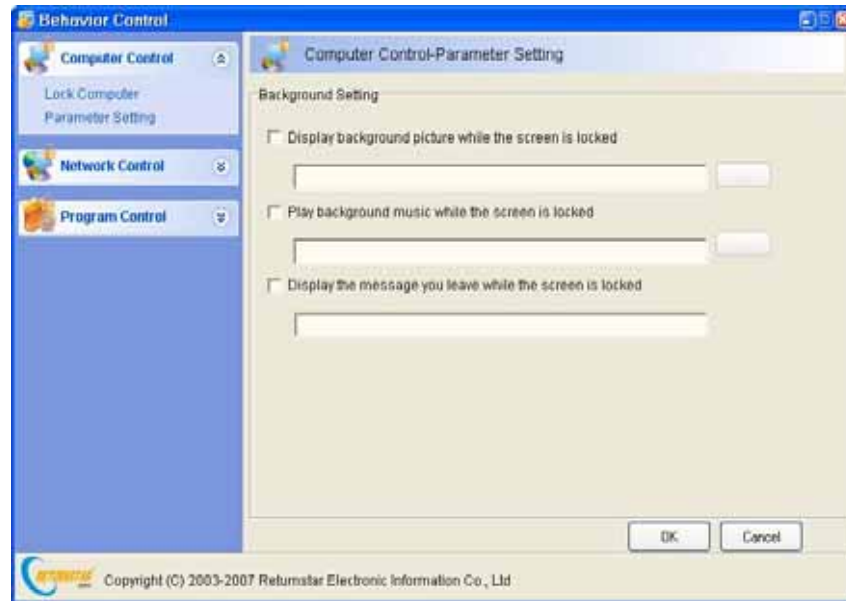
Close all applications when the computer is locked: When the computer is locked, all open applications at the taskbar will be closed. The system default is " *Enabled*".

Have a break of [] minutes for every [] minutes: To protect eyesight and adjust the sitting posture, 1-30 minutes break will be made for users when using computer for every 1-90 minutes.. The system default is " *Have a break for 10 minutes for every 45 minutes*". Once the using time ends,, it will automatically turn into the PC E-Lock Screensaver. At that time, if someone forces to shut down the PC, it will automatically enter into the PC E-Lock Screensaver mode after it is restarted. Once the break time is over, it will return to the available state automatically. The system default is " *Enabled*".

Automatically close the display in [] minutes after non-operation on mouse and keyboard when computer is locked: When the computer is locked, it will automatically close the display in 1-60 minutes after non-operation on mouse and keyboard in order to protect the display. User who would like to use the computer just needs to move the mouse slightly or press the keyboard, system will automatically turn to PC E-Lock Screensaver. The system default is 1 minute and " *Enabled*".

4.3.1.3 Parameter Setting

Set the Background character of PC E-Lock Screensaver which appear when the computer is locked, such as " *Play background music*", " *Display administrator's photo and message information*" etc. Please refer as follows,



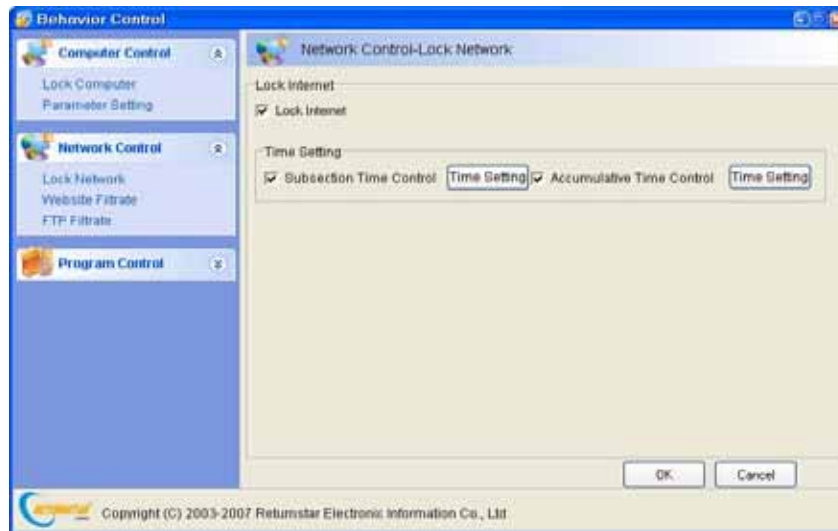
Display the background picture while the screen is locked: Set your background picture as the PC E-Lock Screensaver Interface. To avoid pattern distortion, the user had better to choose the picture size according to your display resolution. We provided some delicate background patterns for download in our website, including 1024x768 and 800x600 image size. The system default is “*Disabled*”.

Play the background music while the screen is locked: When computer is locked, the system will play the background music you set circularly with the PC E-Lock Screensaver Interface appeared. Only “mid” file of music is permitted. We provide some euphonic background music for download in our website. The system default is “*Disabled*”.

Display the message you leave while the screen is locked: Display the rolling message you leave on the PC E-Lock Screensaver Interface. The system default is “*Disabled*”.

4.3.2 Network Control

Provide functions of “*Lock Network*”, “*Filtrate Website*” and “*Filtrate FTP*”. Effectively control the using of network under Controlled Mode. Please refer as follows,



4.3.2.1 Lock Network

Provide “*Lock Internet*” function. Here you can lock Internet visiting according to your Subsection and Accumulative Time Control setting. The system default is “*Enabled*” to “*Lock*” during 12:00-14:00 and 22:00-8:00 everyday, and the accumulative time of Internet is 2 hours per day.



Prompt: After you have selected “*Lock Internet*”, please restart the computer. Then PC E-Lock will lock all functions related to network automatically. The chatting tools and other programs relative with internet will fail in connecting with internet.

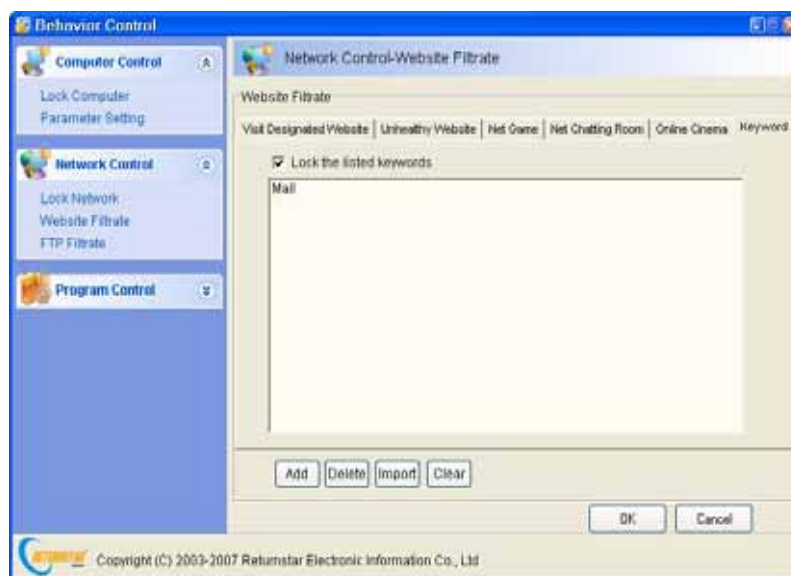
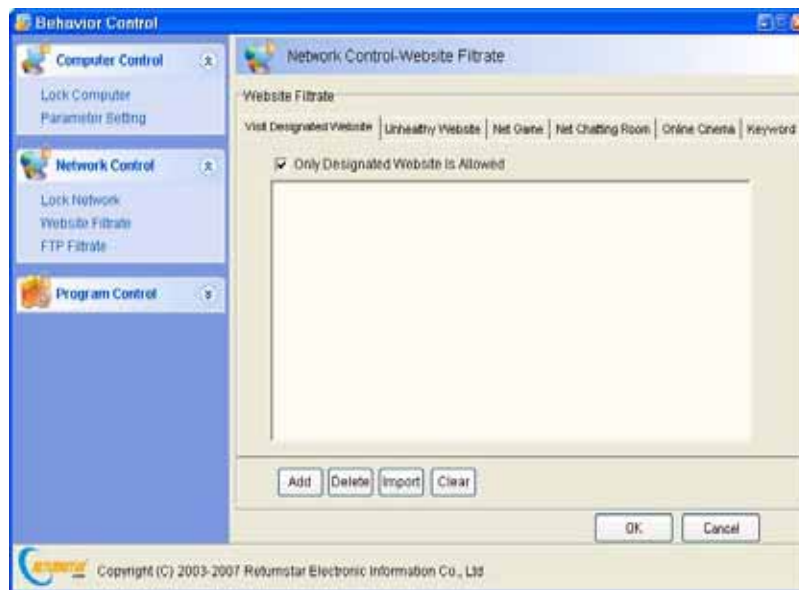
4.3.2.2 Website Filtrate

Provide functions of “*Visit Designated Website*”, “*Filtrate Unhealthy Website*”, “*Filtrate Net Game*”, “*Filtrate Net Chatting Room*”, “*Filtrate Online Cinema*” and “*Filtrate Keyword*”. Through website filtration, you can effectively control your visiting website. If you select “*Visit Designated Website*”, only the websites from designated website list is allowed to visit; select “*Filtrate Unhealthy Website*”, “*Filtrate Net Game*”, “*Filtrate Net Chatting Room*”, and “*Filtrate Online Cinema*”, the system default is to “*Lock the websites which are of the character from the PC E-Lock database and that you added to the filtrate website list*”; select “*Filtrate Keyword*” and the system default is to “*Lock websites which are of the keyword character form the keyword list*” and the keyword is “*mail*”. The system default is “*Enabled*” to “*Visit Designated Website*”. It as well provides function to import website or keyword in “.txt” file and one website address or keyword is for one line. Same website or keywords imported will not be repeated. As follows,



Prompt:

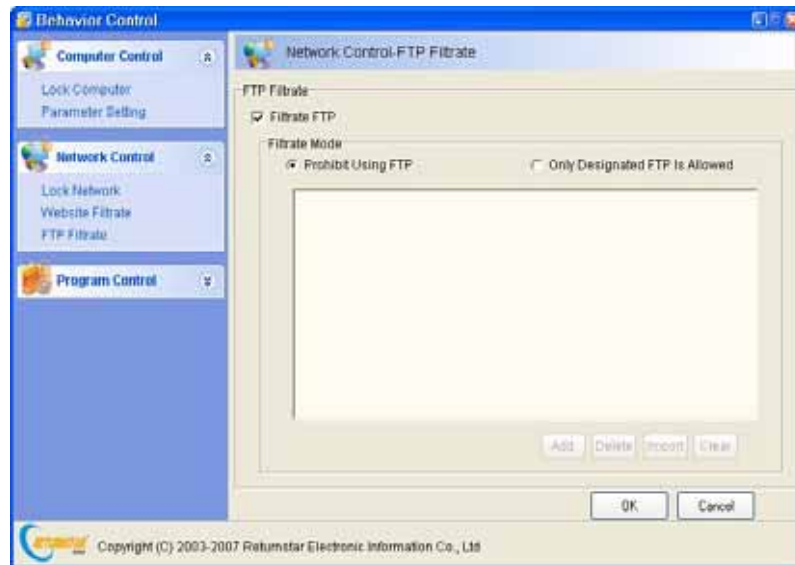
1. The added website must be of the First Class Domain Name. For example, both <http://www.returnstar.com> and <http://www.returnstar.com/index.htm> are the same Class Domain Name. You must type whole website address, namely, “http://www.” not www.returnstar.com or [returnstar.com](http://www.returnstar.com). Then all websites including [returnstar.com](http://www.returnstar.com) will be forbidden or designated.
2. The default internet homepage must be set as “about: blank”.



4.3.2.3 FTP Filtrate

Provide functions of “*Only Designated FTP is Allowed*” and “*Prohibit Using FTP*”. By controlling FTP upload and download, you can effectively control

your visiting website under Controlled Mode. The system default is “*Enabled*” to “*Prohibit using FTP*”. As follows:

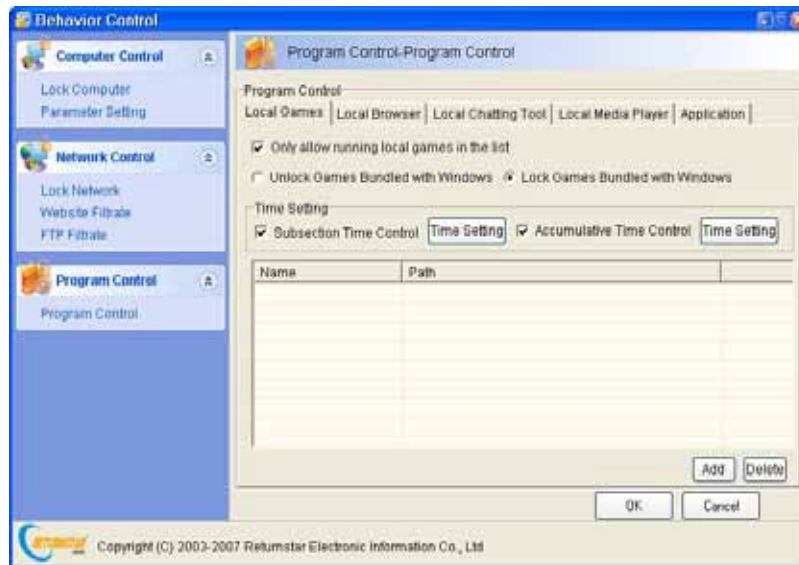


4.3.3 Program Control

Provide functions of “*Application Control*”, “*Local Games Control*”, “*Web Browser Control*”, “*Local Chatting Tool Control*”, “*Local Media Player Control*”, “*Local POP/SMTP Control*”. You can effectively control the program (that is to lock software of computer) under Controlled Mode.

4.3.3.1 Local Games Control

Select the function; you can add games you permit to play. Provide “*Lock Games bundled with Windows*” and “*Unlock Games bundled with Windows*” functions. (Such design is to meet the user’s requirement to limit local games but to open local games bundled with Windows.) “*Lock local games*” can be set according to your Subsection and Accumulative Time Control setting. The system default is “*Enabled*” to play your designated games and “*Unlock*” it all the time, and the accumulative time is 24 hour per day. As follows,



4.3.3.2 Web Browser Control

Select the function and you can add browsers you permit to use. The system default is “Enable” to run IE.

You can control Web Browser according to your Subsection and Accumulative Time Control setting. The system default is to “Lock” during “12:00-14:00 and 22:00-8:00”, and the accumulative time for use is 2 hours per day.

4.3.3.3 Local Chatting Tool Control

Select the function and you can add local chatting tools you permit to use. The system default is “Enabled” to use local chatting tool.

It can control the local chatting tool according to your Subsection and Accumulative Time setting. The system default is to “Lock” during 12:00-14:00 and 22:00-8:00, and the accumulative time is *half an hour per day*.

4.3.3.4 Local Media Player Control

Select the function and you can add local media players you permit to use. The system default is “Enabled” to use local media player.

It can control the local media player according to your Subsection and Accumulative Time Control setting. The system default is to “Lock” during 12:00-14:00 and 22:00-8:00, and the accumulative time is 2 hours per day.

4.3.3.5 Application Control

You can add applications you permit to use. The default is “Enabled” to use “Program Bundled with Windows and Office Software etc” (except games bundled with Windows). Click “Import Installed Program” to search the installed programs on the computer automatically, and control the applications according to your requirement. Thus it can effectively control the software use under Controlled Mode.



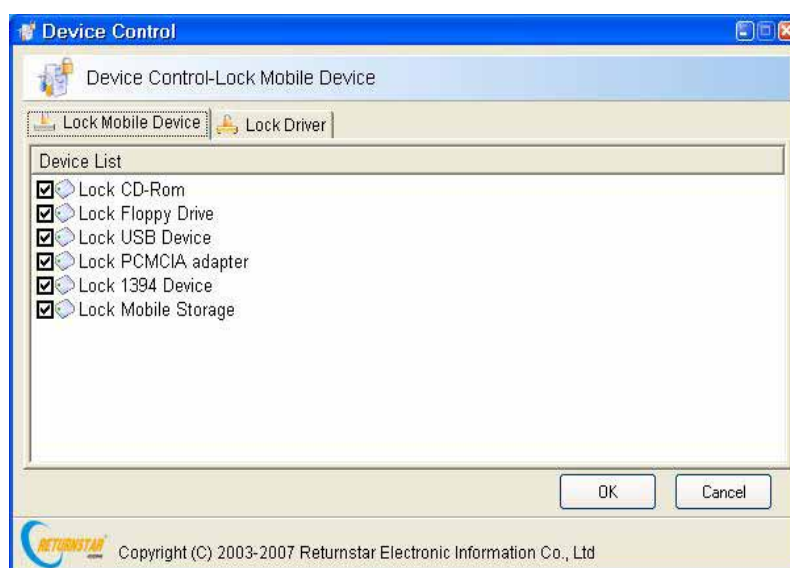
Prompt: you also can add shortcut of any program to the list for program control.

4.4 Device Control

Provide functions of “Lock Mobile Device”, “Lock Drive” and “Lock Other Device”. With these functions, you can effectively control the hardware using under Controlled Mode. Select devices which you need to lock from provided hardware list then click “OK” to save.

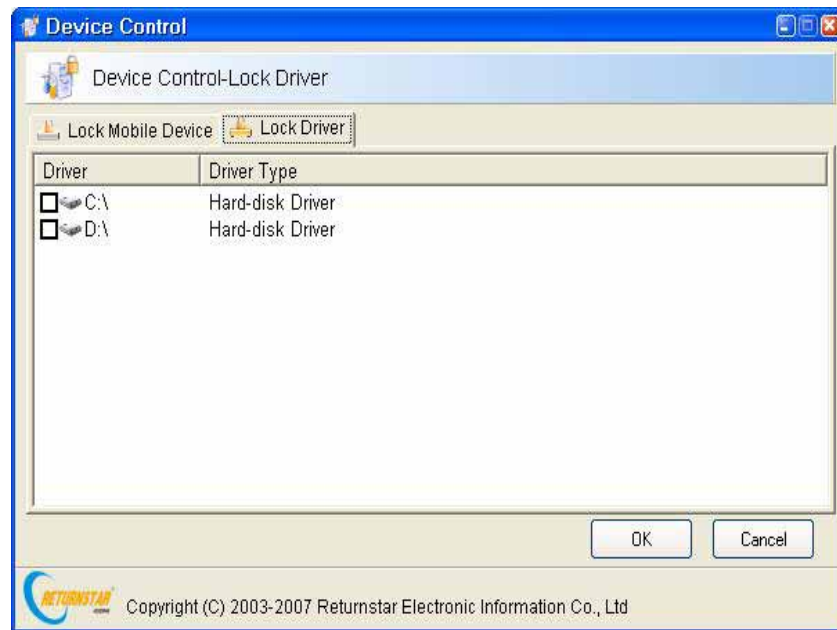
4.4.1 Lock Mobile Device

Provide “Lock CD –Rom”, “Lock Floppy Drive”, “Lock USB Device”, “Lock PCMCIA Adapter”, “Lock 1394 Device”, and “Lock Mobile Storage” etc. Here you can effectively control the computer to install or copy the adult, violent or unhealthy software, games, programs and files through such devices and avoid virus, porn-information intrusion and avoid secret file being revealed under Controlled Mode. The system default is “Lock all Devices”. As follows,



4.4.2 Lock Driver

Provide a list of all current drivers and extended drivers which connect with PC for you to select and lock. The system default is to “Unlock” any driver. As follows,



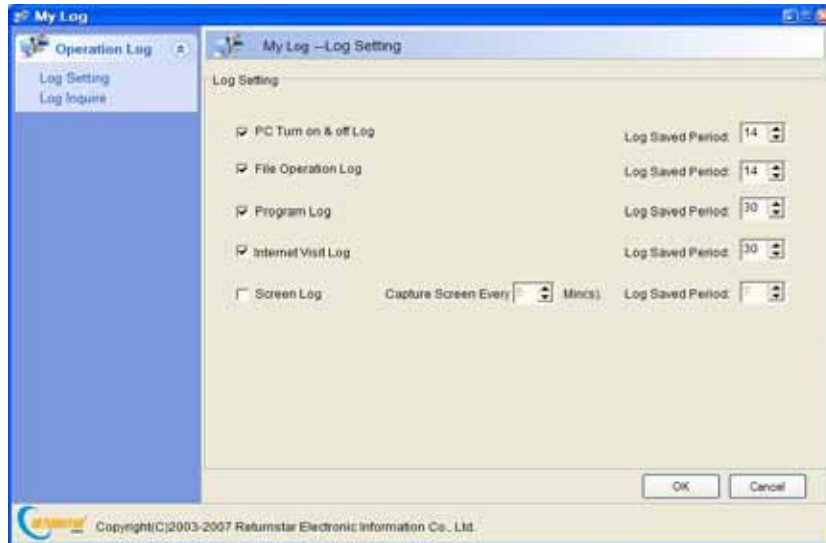
Prompt: No matter which equipment you select, we are setting to unlock any kinds of keyboard and mouse (no matter with USB, parallel or serial port or wireless).

4.5 My Log

Provide ” *Setting*”, “*Inquire*”, “*Clearing up*” and “*Export*” functions for “*PC Turn on&off Log*”, “*File Operation Log*”, “*Program Log*”, “*Website Log*”, “*Screen Log*” and “*User Log*”. By log setting, you can effectively monitor the computer and know about the user’s habit, discover and improve the scientificity and rationality of PC E-Lock management setting under Controlled Mode.

4.5.1 Log Setting

Set the save period of Monitor Log. As follows,

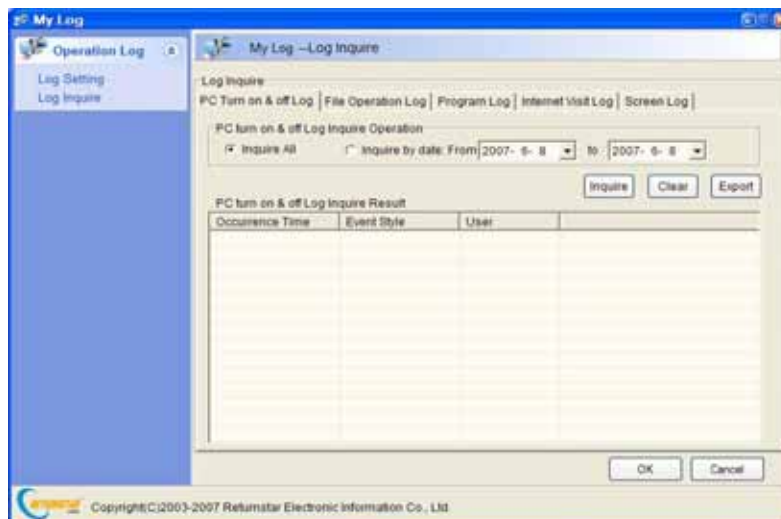


4.5.2 Log Inquire

Provide “*Inquire*”, “*Clear*” and “*Export*” functions for saved Record of Monitor Log according to the schedule. Press “*Inquire*” button to refresh the record in the current list. Click “*Clear*” button to clear up the current record. Click “*Export*” button to export the record in “.txt” file.

4.5.3 PC Turn on&off Log

Convenient to inquire about the details of PC startup recorded under Controlled Mode, including PC Start, Logout and Shut down time and Login User etc. It can save the record for 0-14 days. The system default is 14 days and “*Enabled*” to record. As follows,



4.5.4 File Operation Log

Convenient to inquire about the details of file operation recorded under Controlled Mode, including Occurrence Time, Affair Style, Details etc, (such as

“Copy”, “Delete”, “Move”, “Rename”, “Open”, “Close” etc). It can save the record for 0-14 days. The system default is 14 days and “Enabled” it.

4.5.5 Program Log

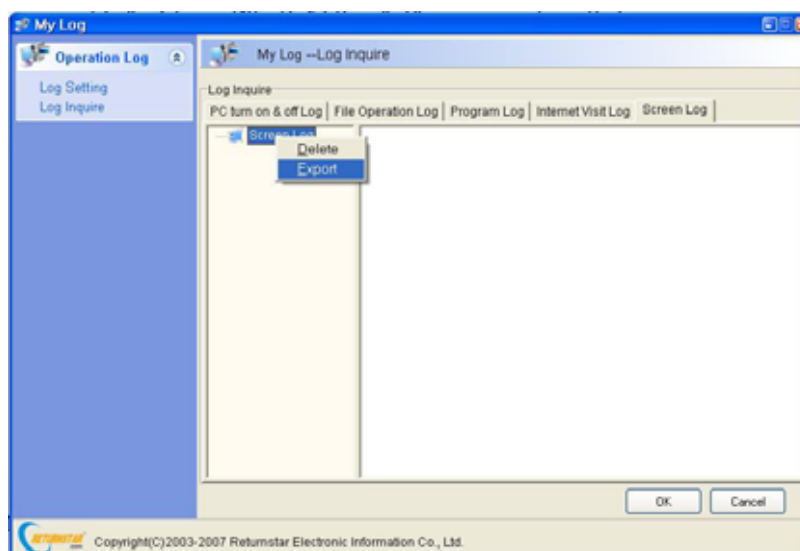
Convenient to inquire about the details of program running recorded under Controlled Mode, including Occurrence Time, Program Name and Affair Type etc. It can save the record up for 0-30 days. The system default is 30 days and “Enabled” it.

4.5.6 Website Log

Convenient to inquire about the details of internet visiting recorded under Controlled Mode, including Occurrence Time, Website and Type etc. It can save the record for 0-30 days. The system default is 30 days and “Enabled” it.

4.5.7 Screen Log

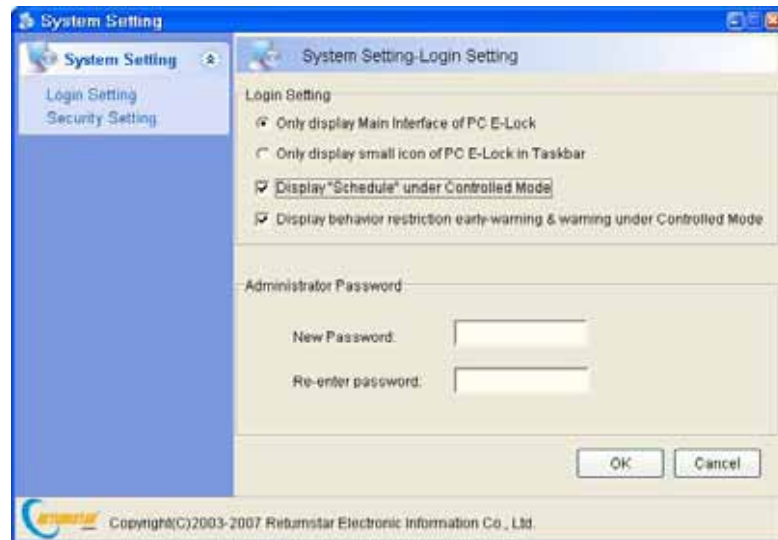
Convenient to inquire about the screen image recorded under Controlled Mode. We can set to capture screen image every other 5-60 minute, (the system default 5 minutes); and the record can be saved for 0-7 days. The system default is 7 days and “Disabled” it. Since that the screen records need for large MD space, it is recommended to delete records by selecting “delete” in the right-key menu of file or folder in the left list after you check it every time. As follows,



4.6 System Setting

4.6.1 Login Setting

Set the product login method and administrator password. As follows,



4.6.1.1 The Main Interface of PC E-Lock

Only the main interface is displayed after logging in. The system default is to “*Enabled*” the main interface.

4.6.1.2 The Small Icon of PC E-Lock in Taskbar

Only the small icon is displayed in the taskbar at the lower-right corner of the desktop when login. Recommend to choose this function for your convenience of operation after this product is installed. The system default is “*Disabled*” the small icon.

4.6.1.3 Show Schedule Tray under Controlled Mode

Under Controlled Mode, the schedule tray will be displayed at the upper-right corner of the screen. Once the user moves the mouse to the upper-right corner of the screen, the schedule tray would appear. By contraries it would automatically hides. This facilitates you to view the computer behavior control schedule. All behavior control related to time will be displayed. The system default is “*Enabled*”.

Schedule	
Lock PC	02:59:31
Eyes Protection	00:44:58
Lock Internet	01:59:31
Lock Browser	02:00:00
Lock Game	Unlock
Lock Chat	00:30:00
Lock Player	02:00:00
Lock Program	Unlock

4.6.1.4 Display Behavior Restriction Early-warning & Warning under Controlled Mode

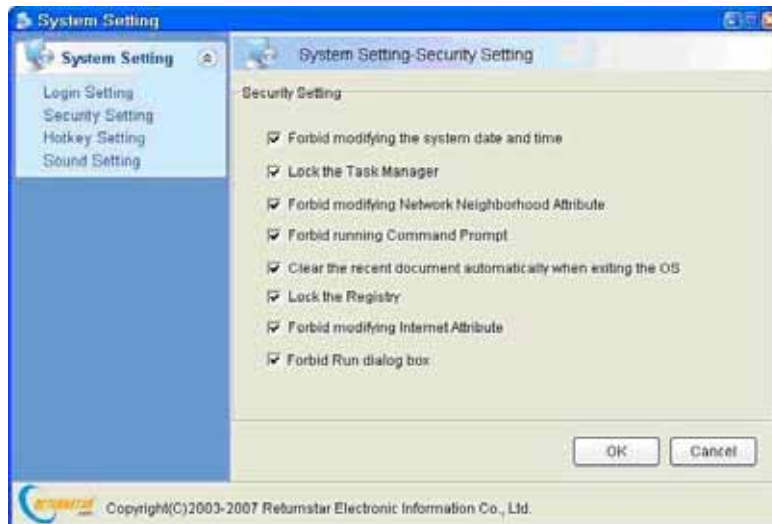
Under Controlled Mode, time arrival early-warning prompt and behavior restriction warning prompt will be displayed in the middle of the screen. For example, the system will automatically popup the prompt in 5 minutes before game time ends under Controlled Mode. In that case, enough time is considered for saving game and the management will be more humanized. Time arrival prompt is set for 5 minutes except eyesight protection mode for 1 minute and. The system default is “*Enabled*”.

4.6.1.5 Administrator Password

Modify the administrator password, which is required when to login (It will be input directly into the lock.).

4. 6.2 Security Setting

Restrict others from using the computer system to ensure the system security and PC E-Lock normal working by this setting. As follows,



4.6.2.1 Forbid Modifying the System Date and Time

Forbid modifying the system date and time under the controlled Mode. The system default is “*Enabled*”.



Prompt: *Strongly recommend to set up BIOS password to prevent BIOS time from being modified.*

4.6.2.2 Lock the Registry

Forbid opening the system registry under Controlled Mode. The system default is “*Enabled*”.

4.6.2.3 Lock the Taskbar Manager

Forbid opening the task manager under the controlled mode. The system default is “*Enabled*”.

4.6.2.4 Forbid Modifying Internet Attribute

Forbid modifying the system Internet properties under Controlled Mode. The system default is “*Enabled*”.

4.6.2.5 Forbid the Run Dialog Box

Taboo running the system dialog box under Controlled Mode. The system default is “*Enabled*”.

4.6.2.6 Forbid Running Command Prompt

Forbid running the system command prompt under Controlled Mode. The system default is “*Enabled*”.

4.6.2.7 Clear the Recent Document automatically when Exiting the OS

Clear the recent documents automatically when exiting OS. The system default is “*Enabled*”.

Chapter 5 Upgrade

We provide two ways to upgrade the product:

- Click “*Upgrade*” option on the main interface or right key menu of small icon in taskbar, system will automatically prompt that upgrade package is found and now it is upgrading (subject to upgrade package version NO. and date). There is no need to uninstall the old version’s software when upgrade.



Prompt: *The function is only provided for registered version.*

- You have to uninstall the old version, and then download the new version to install from our website: www.recoverystar.com if this product has been significantly improved and upgraded.

Chapter 6 Notice

6.1 The product can not be used under the Windows 95, Windows NT 3.51, and Windows NT 4.0.

6.2 All functions of the product can be used separately and multiple set, but please note the function of “*Lock Computer*” has the priority to work.

6.3 It is not allowed to install another product of the same model on the same system.

6.4 You have to install the product for each operating system as your PC with multi-operating systems.

6.5 Please reinstall the product under newly installed operating system at once, in order to guarantee normal using.

6.6 We designed two passwords in this product: Administrator (parent) Password and Super Password. The Super Password is the product registration No., so keep and secure your product registration No. in great attention.



Important Statement: *The product series has been significantly upgraded. If your version is under V9.0, uninstall it after decrypting the files (folders) and secret disk and then install the new version V9.0.*

Chapter 7 FAQ

7.1 Does PC E-Lock software affect other software running after locking the game and internet locked?

A: It will not affect other software running except some special 2D/3D graph and image processing program.

7.2 Is there product with similar function in the market at present?

A: There is no similar product with such high security and efficiency in the market at present. Maybe there are some products (pure software / software+ hardware) achieve some functions but with following shortcomings:

- Easy to be decrypted.
- Easy to be uninstalled and deleted by administrator.
- Easy to terminate or delete its program in the registry and task manager.
- Invalid under the safe mode.

Please be cautious to purchase.

7.3 Can the function of lock unhealthy website block the healthy information?

A: It is possible. It is rather difficult to confine the unhealthy information. The information unhealthy or specified to the adult actually exists in the webpage which contains the keywords like "*Female*", "*life*" and "*Make friends*". The product adopts the strict measure to extremely block the adult topic display, together with possible affection to browse news webpage. Regarding this, parents and administrator should see both side of it.

Appendix: Purchase and Register

Trial: you can download our Returnstar PC E-Lock software package to install from our website (<http://www.recoverystar.com>) and some large share software website, and you can get a trial for 30 times. The trial time is subject to your booting PC E-Lock. After 30 times, if you want to go on, you must register.

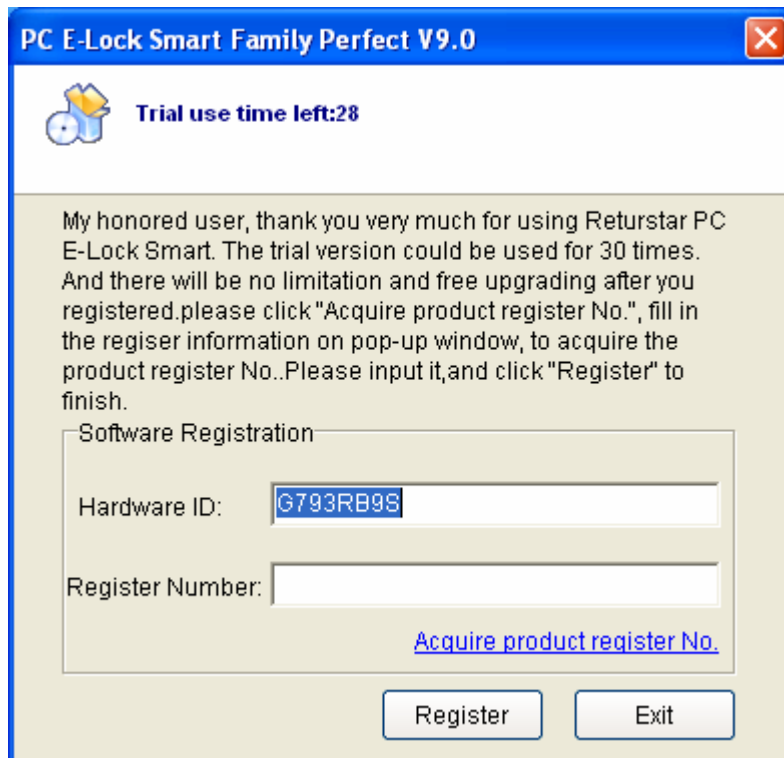
Purchase: Contact Returnstar Electronic Information Co., Ltd headquarter or our business agents to purchase genuine software. A full set of software includes Install CD, Product Serial Number and User Manual. Or you can get Product Serial Number through online purchase on large share software website.

Register: No need to un-install a trial version after purchasing the software. Enter the Product Register Interface and click “obtain Product Registration No.”; then input your product SN and Hardware ID Code in the popup box to acquire Product Registration No. Write down your Product Registration No. and input it in the Product Register Interface, and click “Register” button to finish registration. If your 30-time trial ends, it will prompt you to input Product Register Number after you start PC every time. You can input Product Register Number in the prompt box and press “Enter” to finish.

Besides, you can use your E-mail or telephone to acquire Product Register Number manually. Our detailed information is as below:

Email: master@recoverystar.com

Telephone: +86-591-83385086



Caution: Please be sure to register after you install the product. The unregistered user only can use 30 times, by contraries the user can use without any limited and free upgrade. If your PC E-Lock Smart cannot acquire register, and your trial is up,, moreover you don't want to use this product, then you have to uninstall this product.. You can uninstall directly without login the product. Please note this product is unable to use and will prompt "Your trial times have ended!" if you reinstall PC E-Lock.