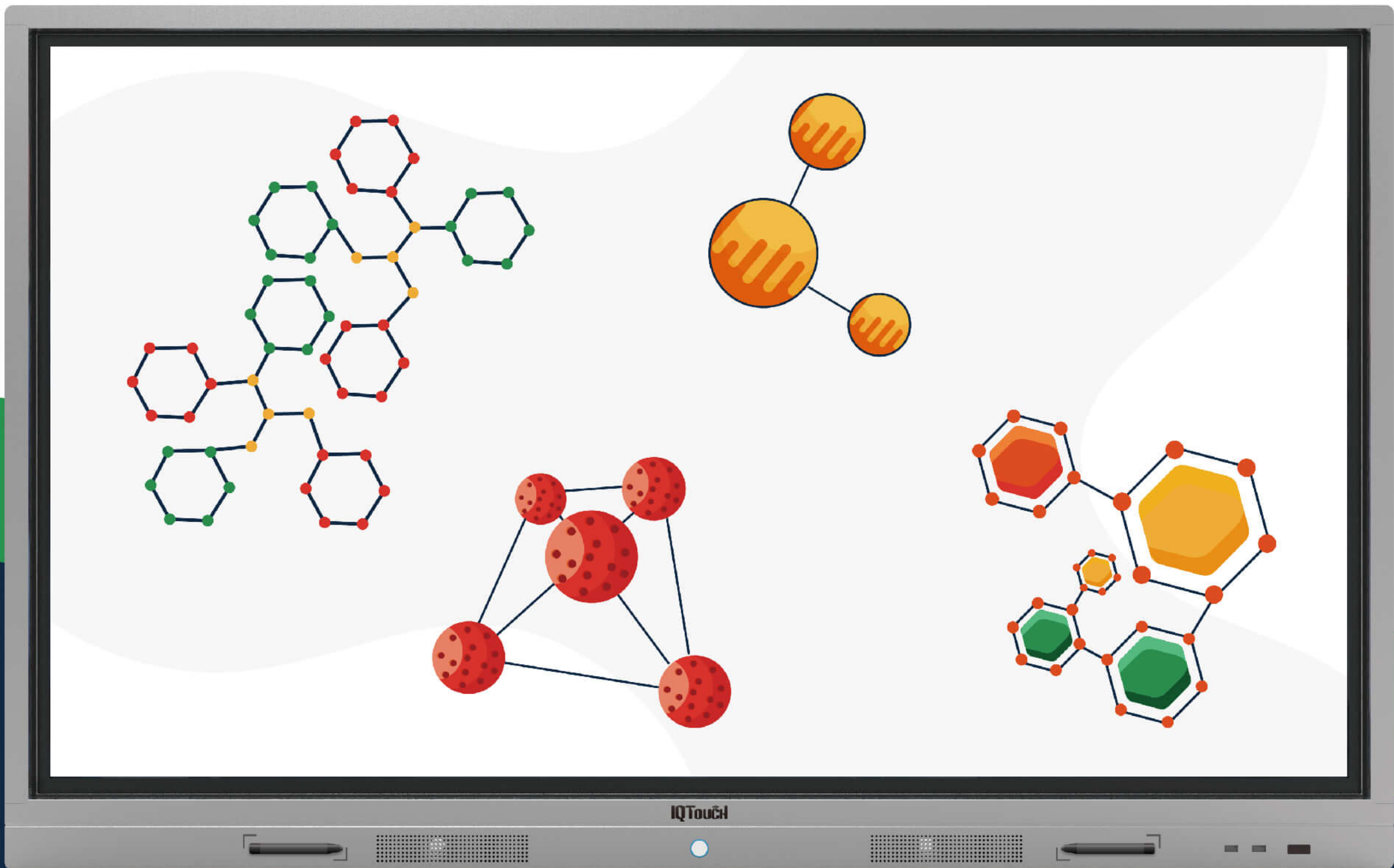


IQTouch[®] L PRO SERIES



IQTouch L Pro features 10 point touch and Android 6.0 system.

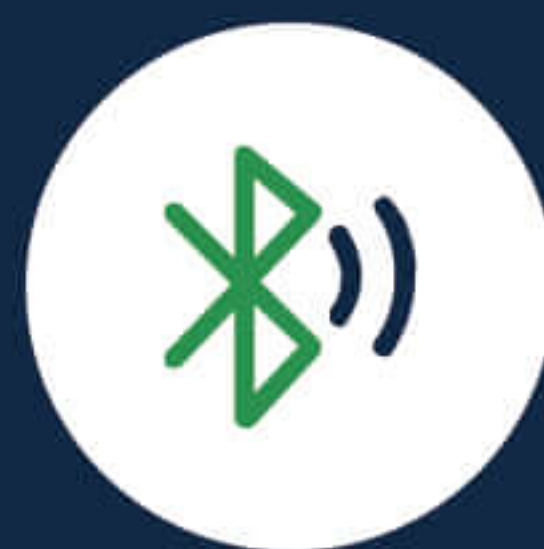
It is very easy for annotation and 4K UHD crystal clear presentation. With optional multi-screen casting projection, it can create a collaborative and interactive atmosphere in the classroom or workplaces, where partners could work together by casting their devices wirelessly.



10-point touch



4K UHD image display



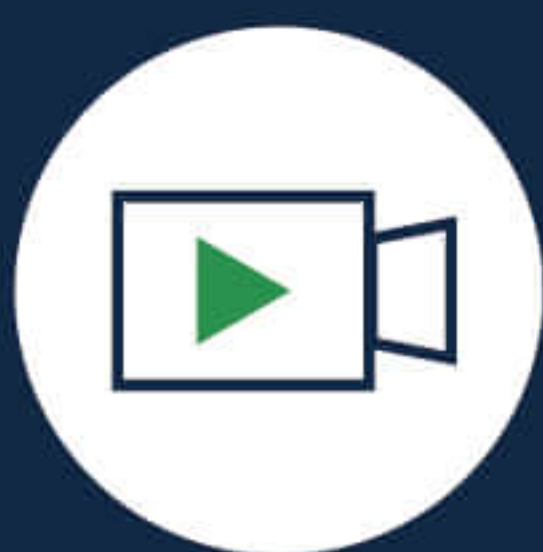
Built-in WIFI hot spot & Bluetooth



Built-in Android system to download all your favorite Apps from Google Play Store



Energy-saving mode to save energy



Built-in screen recording function



Child lock can lock screen and power button



All-channel annotation and built-in whiteboard software with QR code scan to share

Specification

Model	LE055MD	LE065MD	LE075MD	LE086MD
Diagonal Size	55inch	65inch	75inch	86inch
LED Light Source	Backlight	Backlight	Backlight	Backlight
Aspect Ratio	16:9	16:9	16:9	16:9
Resolution	3840*2160	3840*2160	3840*2160	3840*2160
Brightness (typ)/(min)	400cd/m ²	400cd/m ²	400cd/m ²	400cd/m ²
Contrast Ratio (typ)/(min)	5000:1	5000:1	5000:1	5000:1
Response Speed (typ)/(min)	5ms	5ms	5ms	5ms
Depth of Color	8bit	8bit	8bit	8bit
Viewing Angel	178°	178°	178°	178°
Video Standard	PAL/SECAM/NTSC;BG /DK /I/L			
Built-in Speaker	2*15W	2*15W	2*15W	2*15W
Front Ports	USB2.0*2			
Input Ports	HDMI*2,VGA*1, USB*2,YPBPR*1, AV*1, AUDIO*1,LAN*1,RS232*1,TF*1			
Output Ports	SPDIF*1, EARPHONE*1, AV*1,Touch-USB*1			
Android	CPU	Cortex A53/1.5GHz/Quad-core		
	RAM&ROM	2GB DDR3/32GB		
	Version	Android 6.0		
OPS (Optional)	I3/I5/I7, 4G/8G, 500G/1T			
Interactivity	Resolution	32768*32768		
	Touch Points	10		
	Scanning Speed	95~105fps		
Power Supply	100~240V, 50-60 Hz			
Power Consumption	≤ 138W	≤ 168W	≤ 300W	≤ 291W
Stand-by Power Consumption	< 0.8W	≤ 0.5W	≤ 0.5W	≤ 0.5W
Working Temperature	0°C~ 40°C			
Net Weight	29Kg±1Kg	45Kg±1Kg	59.4Kg±1Kg	80.3Kg±1Kg
Gross Weight	34Kg±1Kg	59.2Kg±1Kg	75.4Kg±1Kg	99.54Kg±1Kg
Product Size (W*D*H) (mm)	1263.3*95.55*771.3	1514.3*102.1*945.1	1735.8*107*1069.25	1989*114*1205.95
Packing Size (W*D*H) (mm)	1385*185*905	1640*215*1055	1858*220*1195	2112*240*1326
Optional Accessories	Wireless Keyboard and Mouse, Mobile Stand, Telescopic Pointer			

*Specifications are subject to change without notice. *All dimensions±1cm.

For better interaction, we suggest you using IQTouch together with:

HARDWARE



SOFTWARE



IQClass Software



IQClass Plus Software



IQSchool Solution

www.IQBoard.net

IQ Authorized Dealer



FUTURE CLASS, IQ CLASS

Returnstar Interactive Technology Group CO., LTD.
 6th Bldg. High-Tech Base. Fuzhou Fujian Prov. China
 0086-591-38202660
 0086-591-38203003
www.IQBoard.net
 IQBoard@IQBoard.net



STOCK CODE
836453